



## Weymouth Terrace, E2

£425,000

This split level, two double bedroom apartment has a separate kitchen to living room and Juliet balcony. The property has storage throughout and secure entry.

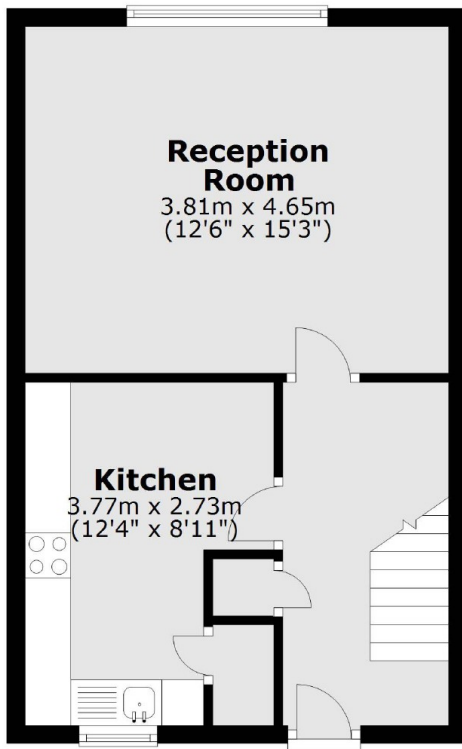
Fellows Court is located quarter of a mile from Hoxton Overground station giving you excellent links into the City. Kingsland Road is the same distance with restaurants and bars located all the way down to Shoreditch.

### Features

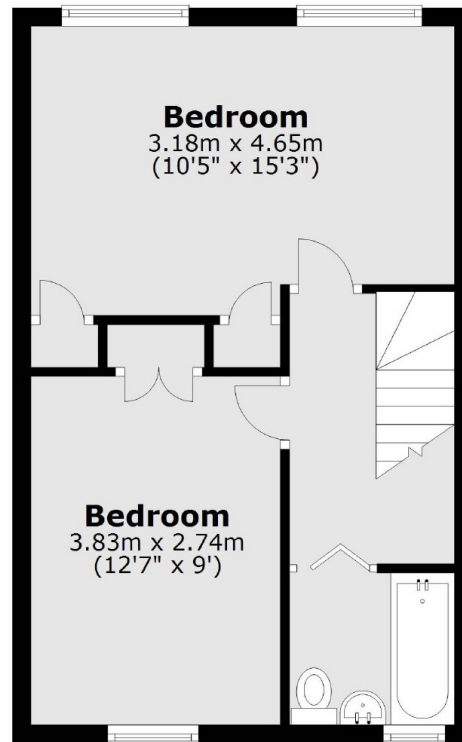
- Two Double Bedrooms
- Split Level
- Secure Entry
- Close To Transport
- Juliet Balcony

# Weymouth Terrace, London, E2

## Ground Floor



## First Floor



Total area: approx. 71.3 sq. metres (767.5 sq. feet)