



## Meath Crescent, E2

£350,000

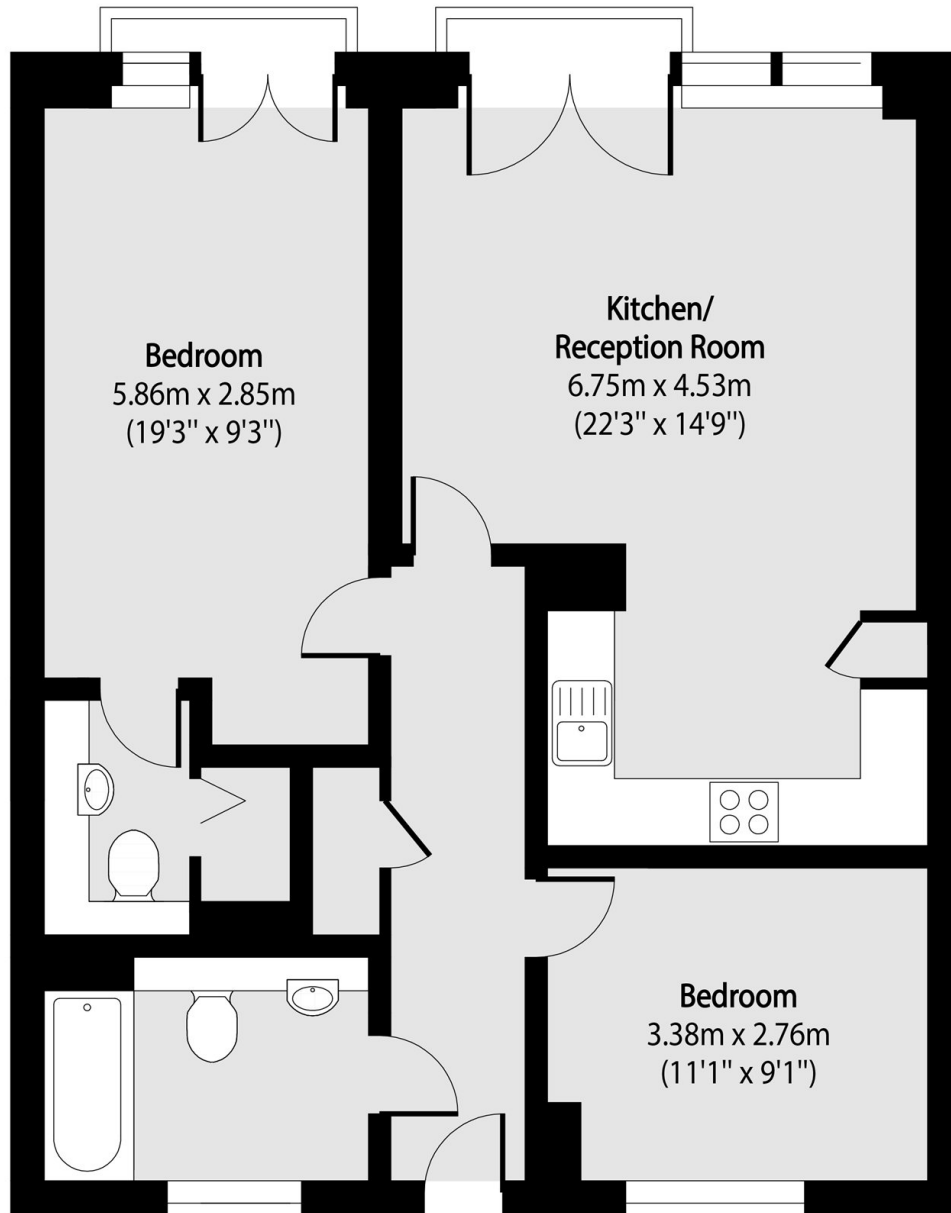
Two bedroom, two bathroom apartment on Meath Crescent. The apartment has a spacious open plan living room with ample space to dine and a fully integrated kitchen, this area gives access to one of the apartments two Juliette balconies overlooking Meath Gardens. The other Juliette balcony is in the principle bedroom which has built in storage and an ensuite, the apartment also has a second double bedroom. There is further storage in the hall as well as the family bathroom.

Meath Crescent is ideally located just a short distance from Mile End (District, Hammersmith&City) and Bethnal Green (Central). Nearby Meath Gardens and Victoria Park can be accessed directly via the the towpath with its local coffee shops and restaurants.

### Features

- Two bedrooms
- Two bathrooms
- Modern development
- Views over Meath Gardens
- Sought after location

Meath Crescent,  
London, E2



Total area (approx): 76.23 sq m (820 sq. ft)