



Ashfield Yard, E1

£800,000

Dexters



Ashfield Yard, E1

A two bedroom, three story Mews House set in the sought after Ashfield Yard, this property offers characterful loft style features throughout. Entering into the main, vast living area you are immediately met with generous natural light made possible by the high ceilings and skylights. This area is currently used as a reception/dining room as is accompanied by the modernised and fully integrated semi-open kitchen as well as the properties elevated terrace.

Heading up the stairs from this area you find the mezzanine which is currently used as the main living room, this area is spacious, bright and gives additional character to this property. The ground floor has the properties two double bedrooms, the principle room has in-built storage and the second room gives access to the communal courtyard. This floor has the modern family bathroom as well as further storage in the hall.

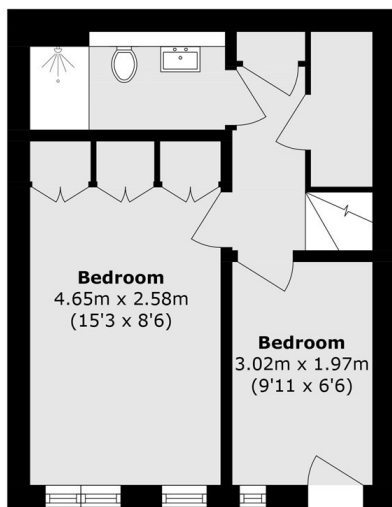
Situated in the heart of Whitechapel, the development benefits from a wide range of transport links, with Whitechapel station just a short walk away providing access to the Elizabeth Line, District, Hammersmith & City, and London Overground services. The area has an array of popular bars, restaurants and entertainment venues within a short distance in the City and Shoreditch.

Features

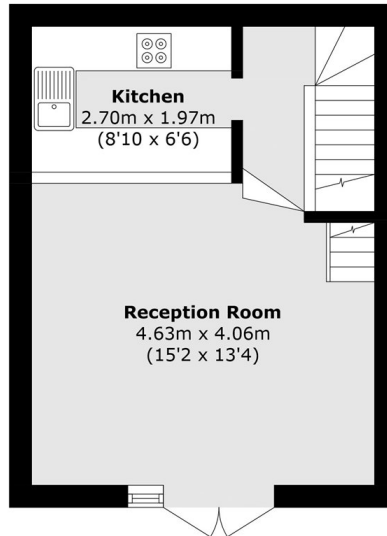
- Two bedrooms + Mezzanine
- Sought after Mews
- High ceilings
- Exposed beams
- Great location



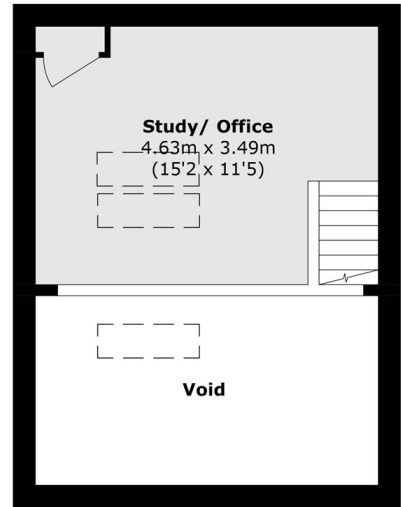
Ashfield Yard, London, E1



Ground Floor



First Floor



Mezzanine

Total area (approx.): 85.8 sq. m (923.6 sq. ft)
(Excluding Void)