

Paul Street, EC2A

£425 Per week

A one bedroom apartment in the heart of Shoreditch. The apartment has a semi open plan kitchen and living area, a private bathroom and a double bedroom. The flat is available furnished.

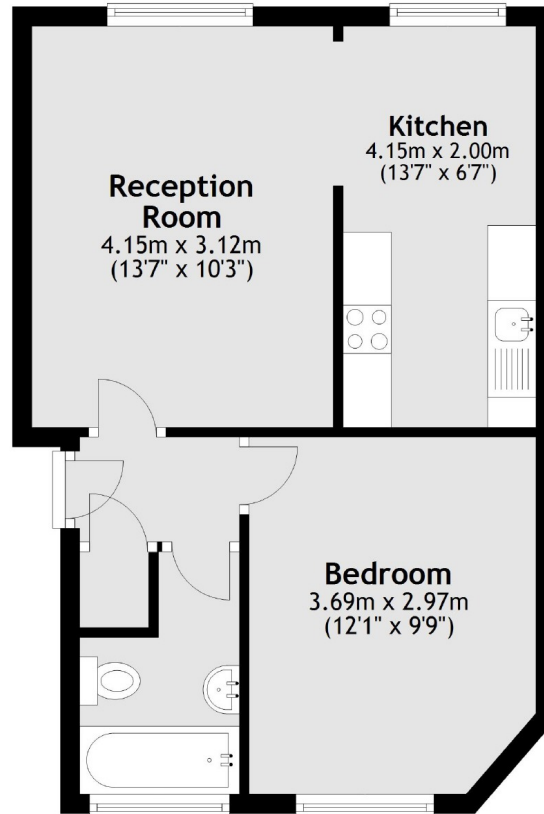
The apartment is located under half a mile from Liverpool St station and Old Street station as well as a short distance to Shoreditch High Street station. The apartment is also in prime Shoreditch location for all the local trendy bars, cafes and restaurants.

Features

- One Bedroom
- Secure Development
- Separate Kitchen
- Wooden Floors
- Great Location
- Furnished

**Paul Street,
London, EC2A**

Fourth Floor



Total area: approx. 39.2 sq. metres (422.2 sq. feet)