



## Drysdale Street, N1

£3,400 Per calendar month

A stylish two-bedroom, two-bathroom apartment in the contemporary Timber Yard development. The apartment features two spacious double bedrooms, including a principal suite with a private walk-in wardrobe, an open-plan kitchen and living area, two well-appointed family bathrooms, and integrated storage throughout.

Located a very short distance from Hoxton Square, this apartment is in the heart of Shoreditch/Old Street with a host of bars, cafes and restaurants.

### Features

- Modern
- Two Double Bedrooms
- Two Bathroom
- Secure Entry
- Great Location
- Walk-in Wardrobe

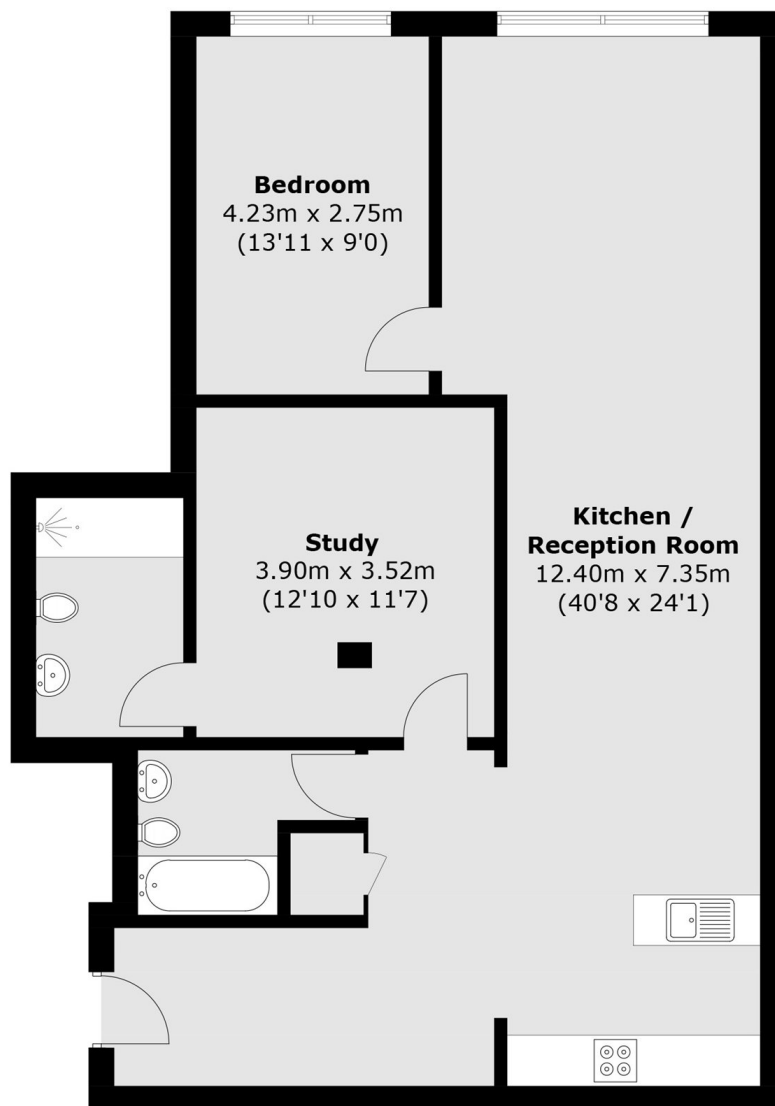


## Drysdale Street, N1

A stylish two-bedroom, two-bathroom apartment in the contemporary Timber Yard development. The apartment features two spacious double bedrooms, including a principal suite with a private walk-in wardrobe, an open-plan kitchen and living area, two well-appointed family bathrooms, and integrated storage throughout.



# Drysdale Street, London, N1



## Ground Floor

Total area (approx.): 91.4 sq. m (983.8 sq. ft)