



## Middlesex Street, E1

£725,000

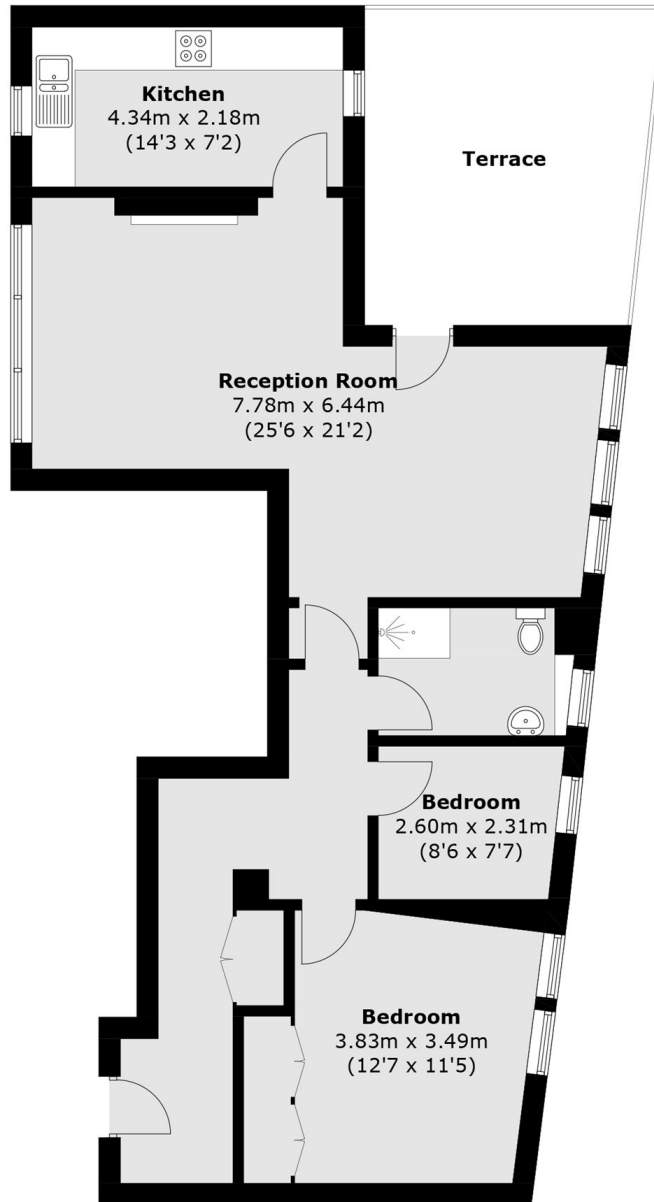
A large, well-presented two-bedroom apartment positioned on the first floor in Astral House. This contemporary apartment boasts a bright and spacious reception room with high ceilings, a separate fully fitted kitchen and a family bathroom. The large private terrace is accessed via the reception room.

Located a short distance from Liverpool Street station (Elizabeth Line), this property sits in the heart of the city. The famous Spitalfields market is also close by with its abundance of shops, restaurants and bars.

### Features

- Two Bedrooms
- Private Terrace
- Secure Building
- Period Features
- 950+ Year Lease
- Chain Free

Middlesex Street,  
London, E1



**First Floor**

Total area (approx.): 81.6 sq. m (878.3 sq. ft)  
Terrace: 17.2 sq. m (185.1 sq. ft)