



Wellington Row, E2

£4,500 Per calendar month

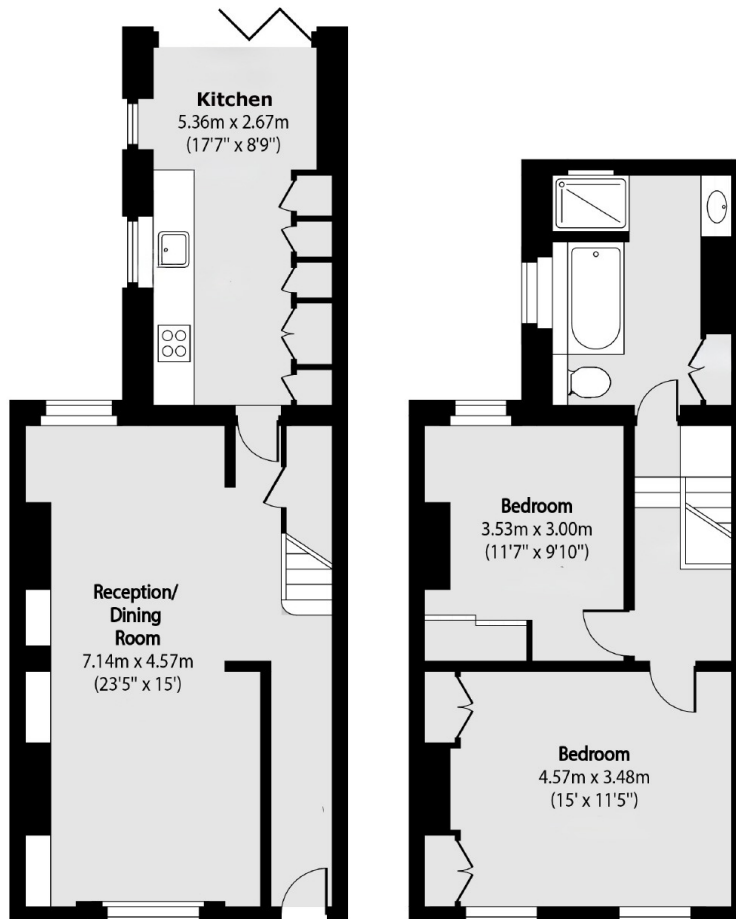
Charming two-bedroom terraced house on Wellington Row, set in the heart of sought-after Jesus Green, Bethnal Green. Full of character with a private terrace and bright living space. Available part-furnished,

Sat in the heart of Bethnal Green's Jesus Green conservation area. A quiet, tree-lined street surrounded by period homes. Moments from Columbia Road Flower Market, Broadway Market, and Shoreditch, offering a perfect blend of village charm and vibrant East London living.

Features

- Two Bedrooms
- One Bathroom
- Garden
- Part-Furnished
- Sought-after location
- Classic architectural details

Wellington Row, London, E2



Ground Floor

First Floor

Total area (approx): 90.30 sq m (972 sq. ft)