



Kerbela Street, E2

£2,600 Per calendar month

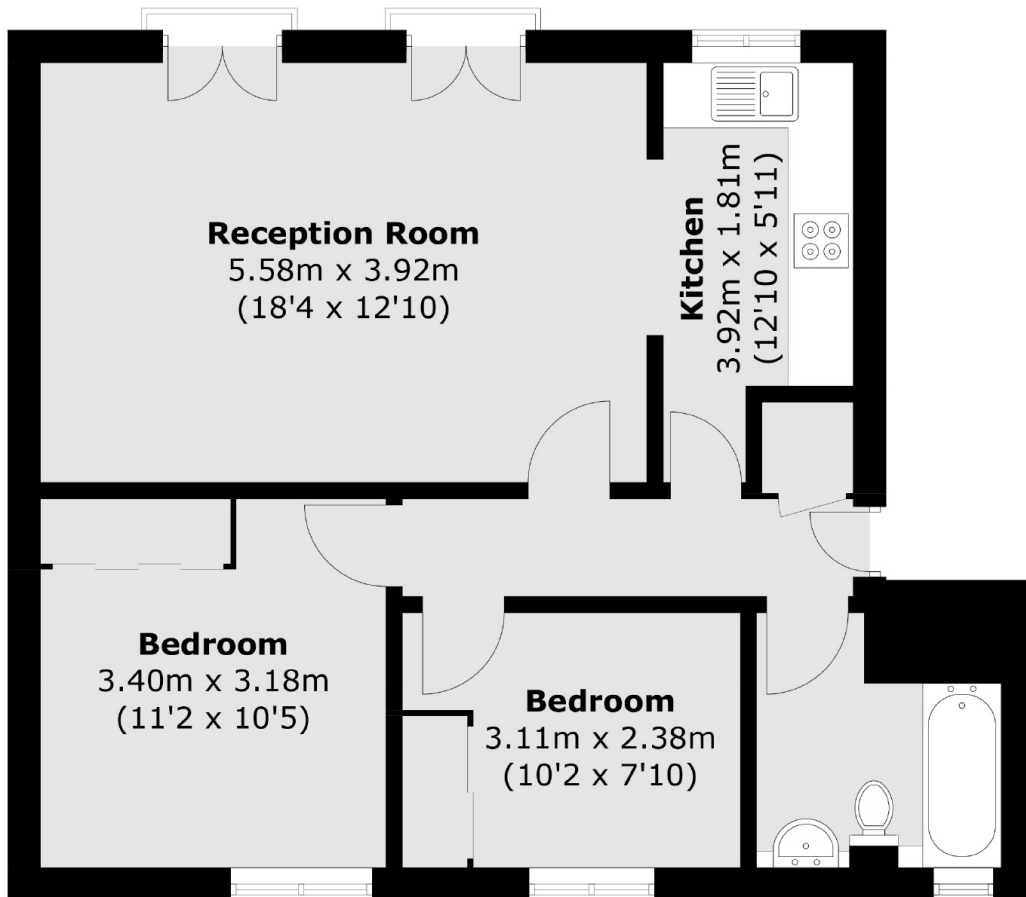
This apartment is based in a modern gated development situated in Shoreditch. The property has a large semi open plan reception room with Juliet balcony that leads to the kitchen and two double bedrooms with fitted wardrobes. The property also has parking available.

The apartment is ideally located in the heart of Shoreditch with great transport links and a selection of shops, bars and restaurants all within close proximity.

Features

- Two Double Bedrooms
- Natural Light
- Modern Bathroom
- Heart of Shoreditch
- Juliet Balcony
- Great Transport Links

Kerbela Street,
London, E2



Total area (approx.): 59.1 sq. m (636.1 sq. ft)