



Bridgewater Square, EC2Y

£800,000

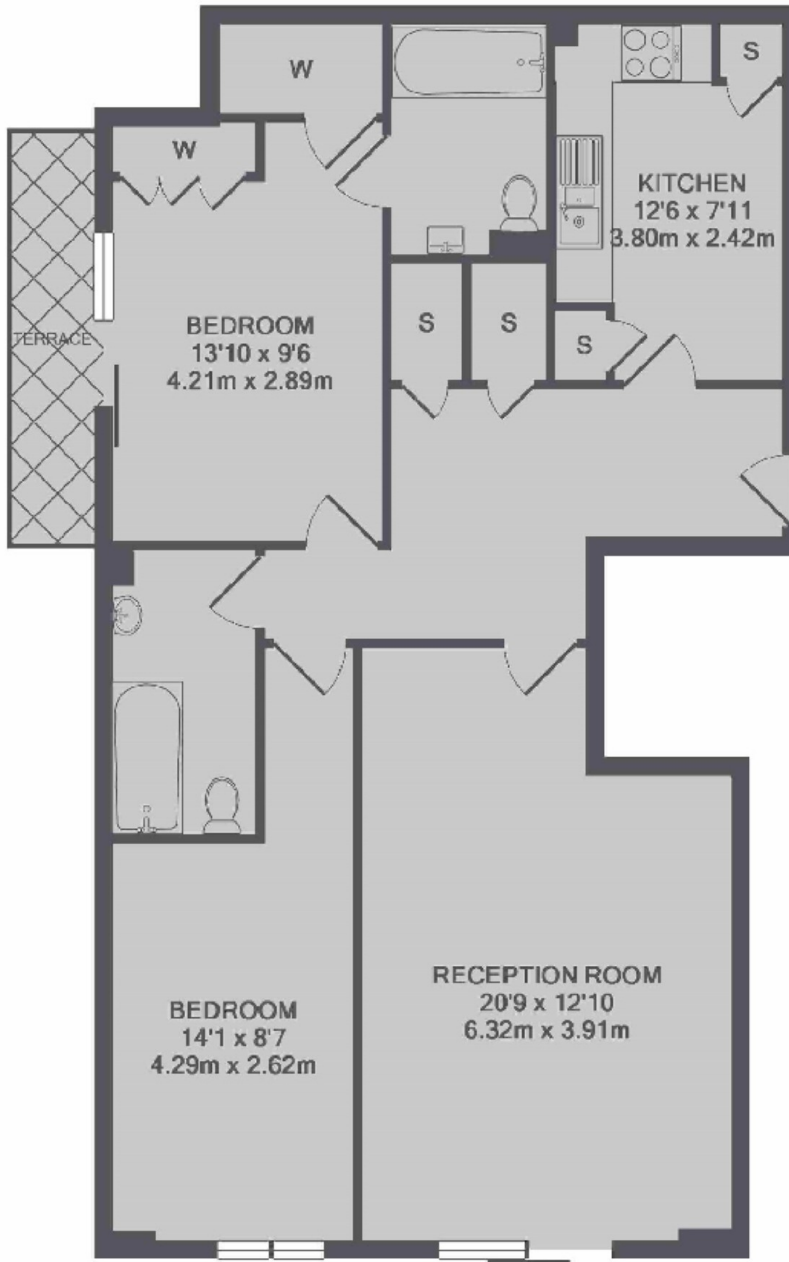
This large two double bedroom, two bathroom apartment is located in the Cobalt Building and has a separate kitchen to living room with integrated appliances. The property has an allocated parking space and sold chain free.

Cobalt Building has lift access and a secure entry system. The property is located a quarter mile from Barbican underground station, with easy access to large supermarkets and amenities on Whitecross Street and One New Change shopping centre by St Paul's.

Features

- Two Double Bedrooms
- Two Bathrooms
- Private Terrace
- Allocated Parking Space
- Chain Free
- Day Time Porter

Bridgewater Square, London, EC2Y



TOTAL APPROX. FLOOR AREA 907 SQ.FT. (84.2 SQ.M.)