



Ellsworth Street, E2

£3,500 Per calendar month

A modern split level two bedroom apartment located in Bethnal Green. This apartment is set just under 700 Sq ft and has two double bedrooms, a large open plan reception, modern bathroom and private outside terrace. The apartment is available furnished.

Gramercy Park Apartments is located a short distance to Bethnal Green Station and has a great choice of bars, cafes and restaurants in the area.

Features

- Split Level
- Two bedrooms
- Modern
- Furnished
- Private Terrace
- Great Location

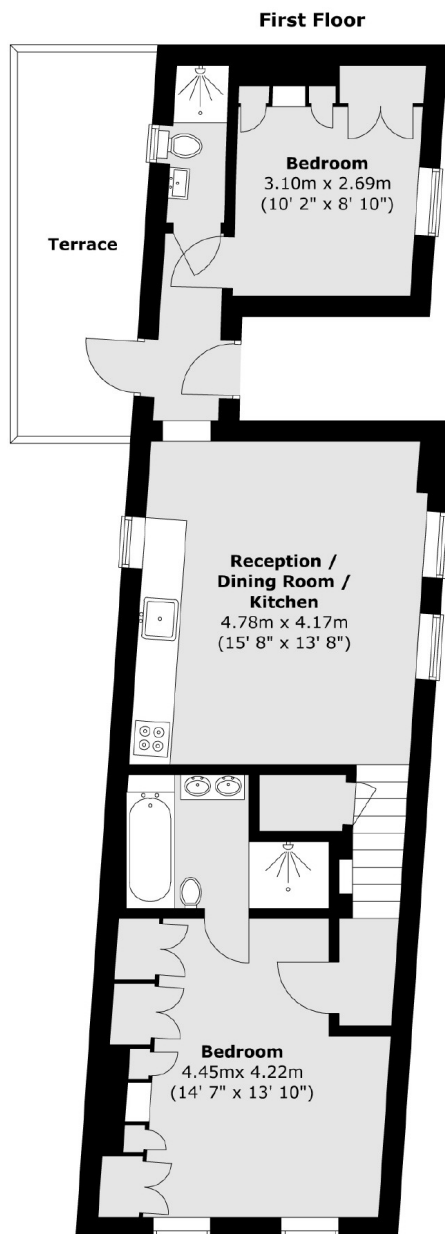


Ellsworth Street, E2

A modern split level two bedroom apartment located in Bethnal Green. This apartment is set just under 700 Sq ft and has two double bedrooms, a large open plan reception, modern bathroom and private outside terrace. The apartment is available furnished.



Ellsworth Street, London, E2



Total area (approx.) : 63.3 sq. m (681 sq. ft)
Total terrace area (approx.) : 10.7 sq. m (115 sq. ft)