



Kingsland Road, E2

£685,000

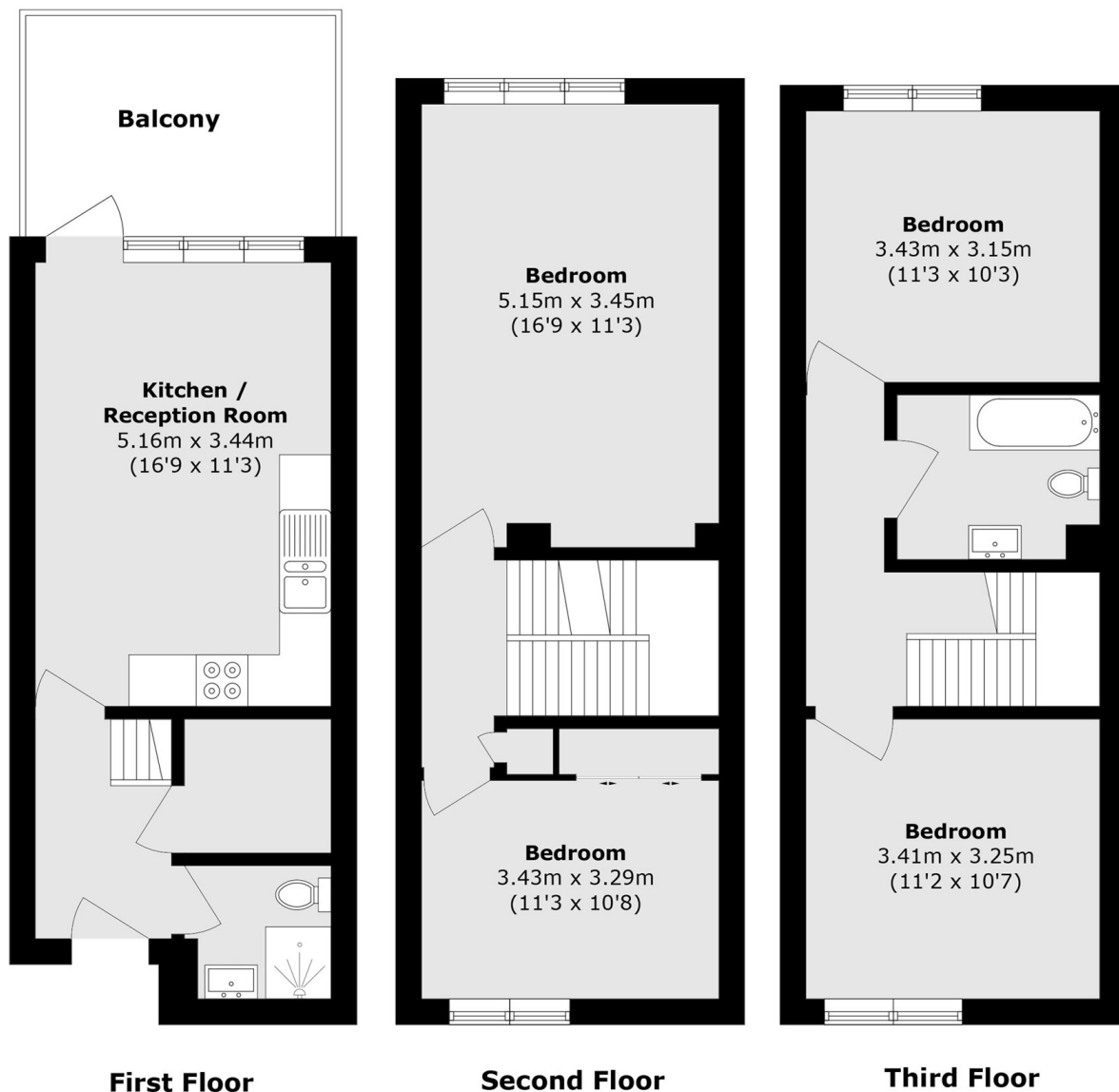
Arranged over three levels this spacious four-bedroom townhouse style apartment offers generous proportions, excellent storage and an sought after location. The ground floor features a bright and airy open-plan kitchen and reception space, the room flows out to a private rear patio. A shower room is also conveniently located on the ground floor. The upper floors comprise four well-sized bedrooms arranged across the first and second levels. A second bathroom is positioned on the second floor, comfortably serving the upper accommodation. Throughout the house, rooms are well-proportioned and complemented by excellent internal storage.

Positioned on Kingsland Road, the location is exceptional. Shoreditch, Haggerston and Dalston are all within easy reach, offering a vibrant mix of cafés, restaurants, bars and independent boutiques, along with excellent transport links into the City and beyond.

Features

- Four bedrooms
- Two bathrooms
- Large patio
- Private entrance
- Sought after location
- Bright interiors

Kingsland Road,
London, E2



Total area (approx.): 96.1 sq. m (1034.4 sq. ft)

Balcony area (approx.): 9.3 sq. m (100.1 sq. ft)