



## White Horse Lane, E1

£335,000

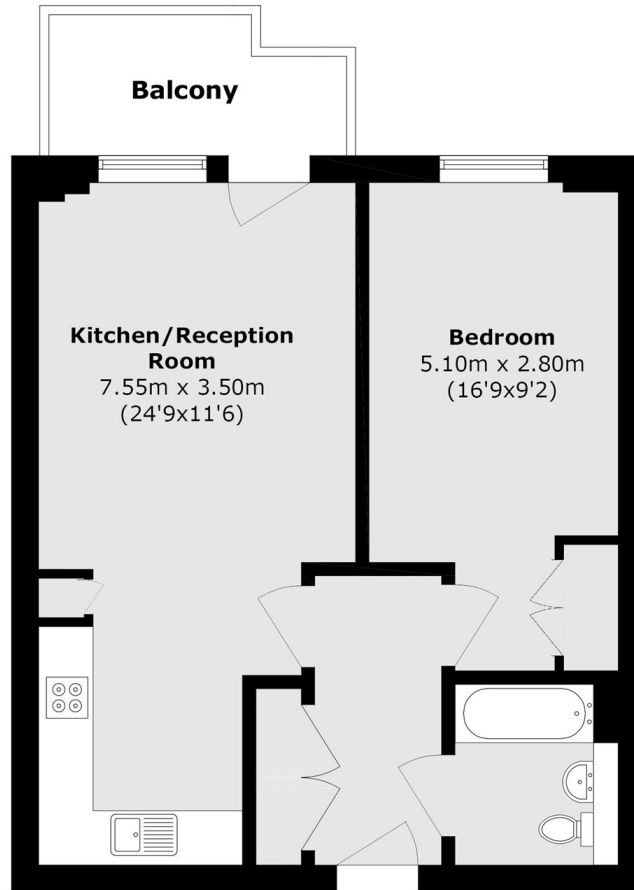
A one bedroom, one bathroom apartment set within a sought after modern development. The property has a bright and spacious open plan living room with a fully integrated kitchen and space to dine, which leads onto the private balcony with far reaching city views. The apartment has a double bedrooms with in-built storage, a family bathroom kept in modern condition and more storage can be found in the hallway.

Ideally located for easy transport throughout the City and beyond via Stepney Green (District, Hammersmith&City) and Whitechapel (Elizabeth, Windrush), as well as multiple bus routes, and Limehouse for the DLR. Nearby Mile End Park and Stepney City Park Farm offer open green spaces.

### Features

- One bedroom
- One Bathroom
- Modern Interiors
- Private Balcony
- City Views
- Sought After Location

# White Horse Lane, London, E1



Total area (approx.): 48.3 sq. m (519.9 sq. ft)

Balcony area (approx.): 4.1 sq. m (44.1 sq. ft)