



Durward Street, E1
£575,000

Dexters



Durward Street, E1

Two bedroom, one bathroom apartment set within this sought after development, Kempton Court. The property has a large, bright semi-open plan living room with ample space to dine and a modernised, fully integrated kitchen, this living area gives access to the properties two Juliette balconies with views of the well maintained communal courtyard. The apartment has two double bedrooms, both of which have in-built storage. Further storage is found in the entrance hall where you also find the high finish family bathroom. The apartment has a generous amount of natural light throughout and has been fully modernised by the current owner.

The development is secure and the property has an allocated, off-street, parking space within the development. Located minutes from wide range of amenities found in Shoreditch and the City and the green spaces of Weavers Fields. The property is within a short distance of Whitechapel (Elizabeth, Circle, District and Hammersmith & City lines) providing easy access into Central London, Heathrow Airport and beyond.

Features

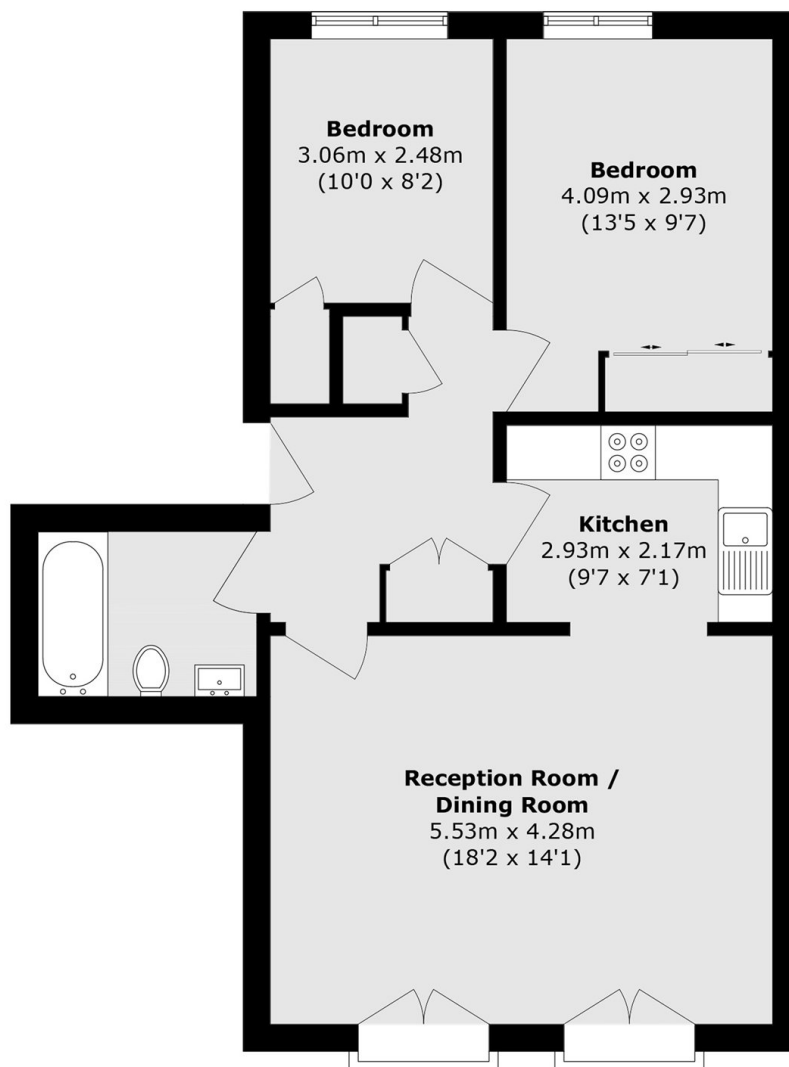
- Share of freehold
- Two Double Bedrooms
- Sought After Location
- Moments from Elizabeth Line
- Gated Development
- Off-Street Parking







Durward Street,
London, E1



Total area (approx.): 64.7 sq. m (696.4 sq. ft)