



## Candle Street, E1

£325,000

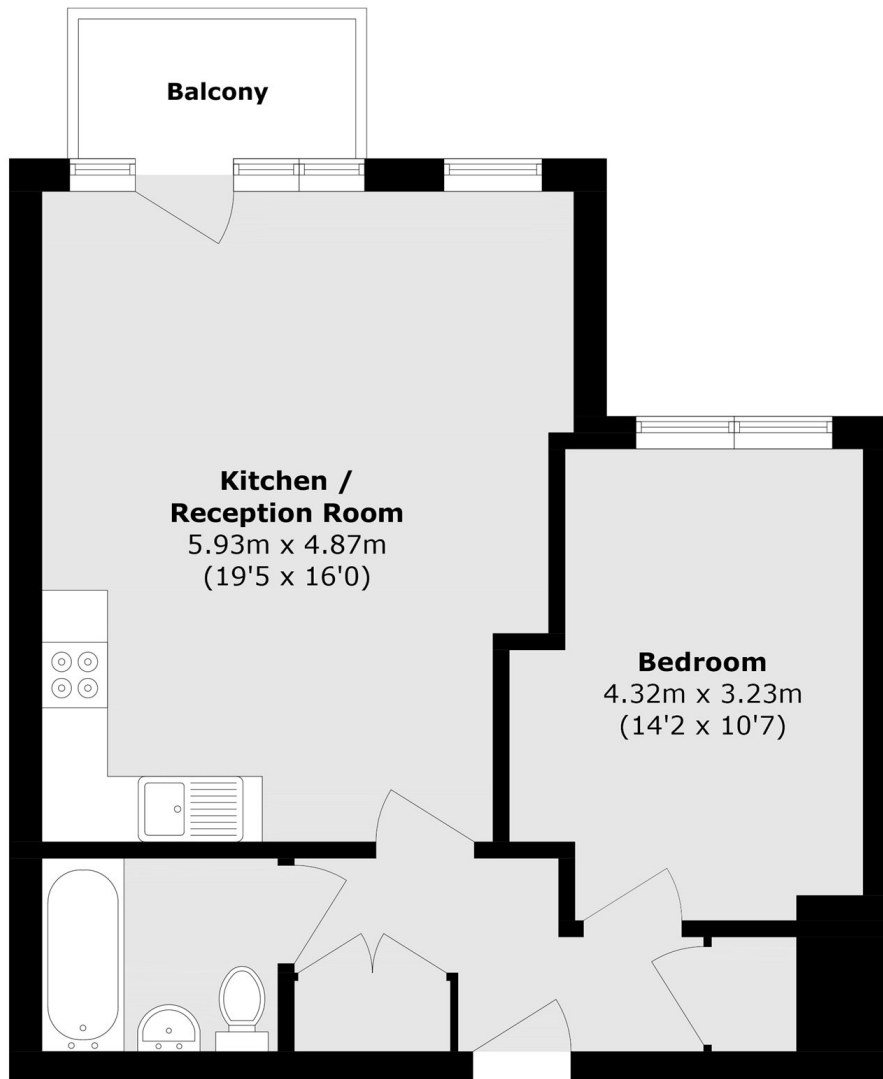
A well-presented one bedroom apartment in a sought after development. The apartment benefits from a large, open plan living room with ample space to dine, this area gives access to the apartments private balcony. The property also has a spacious double bedroom, an entrance hall with plenty of storage, a separate modern shower room and wooden floors throughout. The development also has an area for secure bike storage.

Ideally located between three stations; Stepney Green, Mile End and Limehouse there is a choice of convenient links into Canary Wharf, Central London and beyond. A variety of open green space nearby includes Mile End Park, extending to Victoria Park, the Regents Canal and River Thames path all close by. There are excellent schools nearby, as well as plenty of local restaurants, bars, galleries and markets creating a vibrant and versatile setting.

### Features

- One bedroom
- One bathroom
- Bright, modern interiors
- Sought after development
- Great local amenities

Candle Street,  
London, E1



## Ground Floor

Total area (approx.): 53.0 sq. m (570.4 sq. ft)  
Balcony area (approx.): 3.2 sq. m (34.4 sq. ft)