



Colville Estate, N1

£3,000 Per calendar month

A well presented property on the ground floor of Francis House. This apartment has three double bedrooms, a spacious living room with a separate kitchen, has tiled and wood floors throughout and is offered furnished.

Francis House is close to Old Street with access to the Northern Line and Great Northern Rail as well as the new Cycle Highways. Twenty Four hour bus routes run from New North Road.

Features

- Three Bedrooms
- One Bathroom
- One W/C
- Recently Renovated
- Great Location
- Great Transport Links

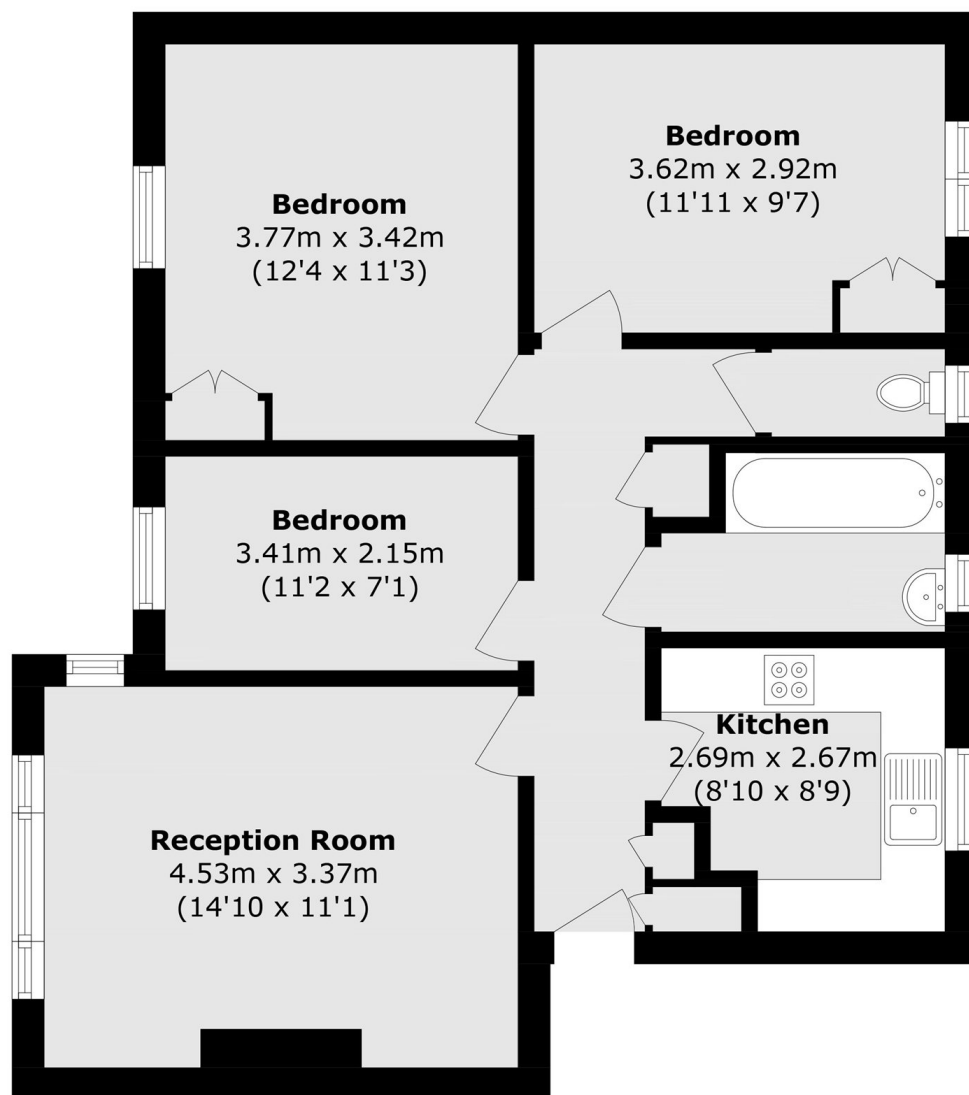


Colville Estate, N1

A well presented property on the ground floor of Francis House. This apartment has three double bedrooms, a spacious living room with a separate kitchen, has tiled and wood floors throughout and is offered furnished.



Colville Estate, London, N1



Ground Floor

Total area (approx): 69.0 sq. m (742.7 sq. ft)