



Gosfield Street, W1W

£1,100 Per week

Dexters



## Gosfield Street, London, W1W

A three bedroom penthouse apartment in Fitzrovia with skylights in the roof allowing for plenty of natural light and an open plan living kitchen

This split level apartment has been refurbished throughout and is on the top floor of a new development in Fitzrovia. The top floor is a large open plan living/ kitchen room with wooden floors, skylights and a private balcony.

Two out of the three bedrooms have ensuite bathrooms and the master bedroom offers a walk in wardrobe, there is also a separate guest w/c.

Charlotte's Place is a vibrant and trendy part of Fitzrovia. The property is a short walk away from many shops, bars and restaurants including the trendy Japanese Roka.

### Features

- Three Bedrooms
- Bright Throughout
- Wooden Floors
- Two Bathrooms
- Porter And Lift
- Balcony





# Gosfield Street, London, W1W

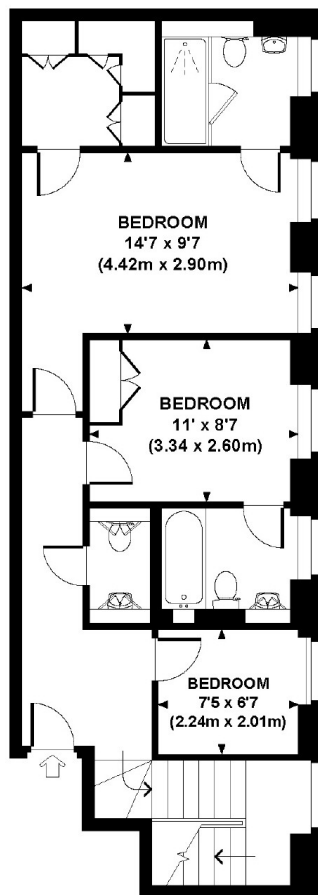
## GOSFIELD STREET, W1W

Approx. gross internal area

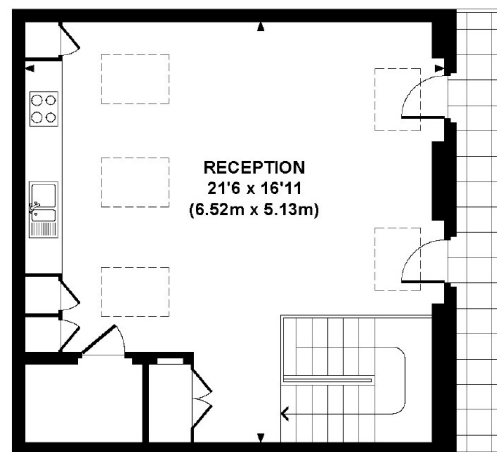
1085 Sq Ft / 100.8 Sq M.

Representation of current layout.

Not to scale.



THIRD FLOOR



FOURTH FLOOR

# Dexters

Fitzrovia  
66 Goodge Street, London,  
W1T 4NG

Lettings  
020 7067 2402

Energy Rating: B. We aim to make our particulars both accurate and reliable. However they are not guaranteed; nor do they form part of an offer or contract. If you require clarification on any points then please contact us, especially if you're traveling some distance to view. Please note that appliances and heating systems have not been tested and therefore no warranties can be given as to their good working order.

 **RICS** | Regulated  
Estate Agent  
and Letting Agent

[dexters.co.uk](http://dexters.co.uk)