



Suffolk Street, SW1Y

£1,695 Per week

Dexters



Suffolk Street, London, SW1Y

A luxurious three bedroom, three bathroom apartment on the fourth floor of the gated brand new Hobhouse Court development designed by Arquitectonica with onsite porter,

Hobhouse Court is located less than 50 meters from Trafalgar Square and is between Mayfair, Leicester Square and St James's Park.

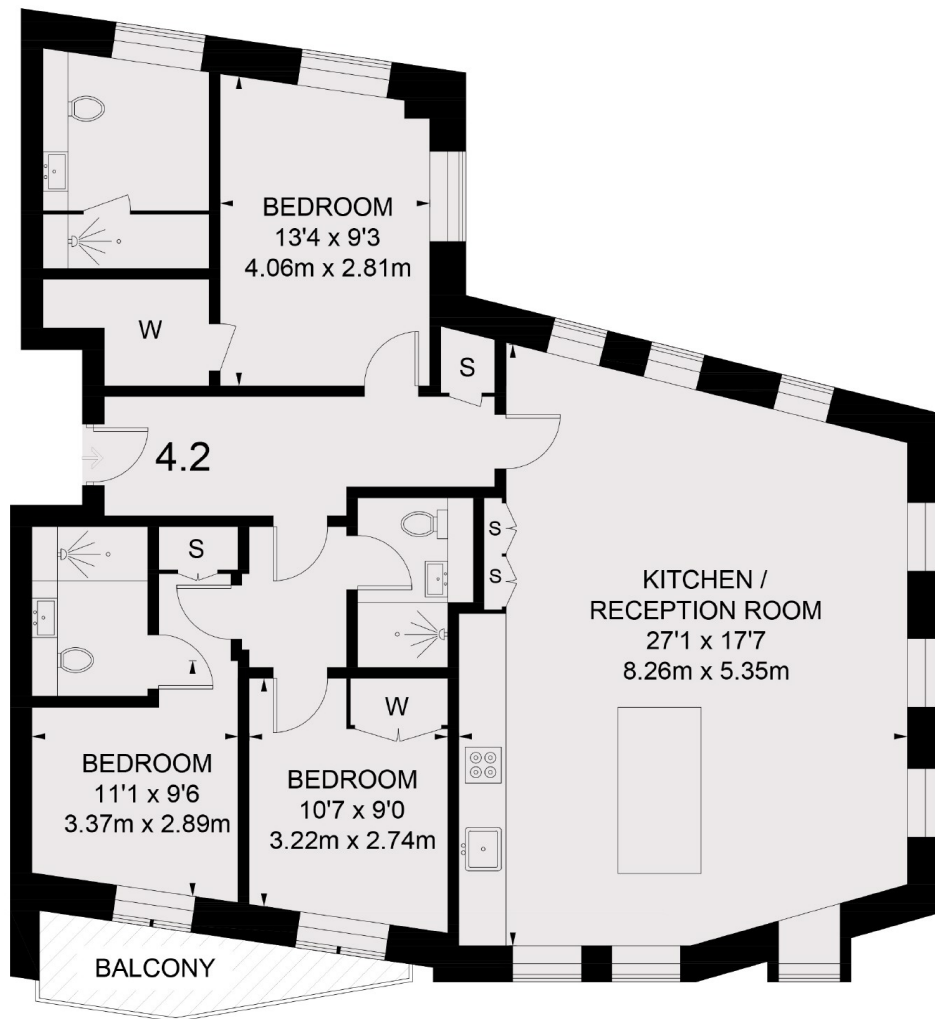
Leicester Square Station, Piccadilly Circus and Charing Cross Station are all located within walking distance of the development.

Features

- Unrivalled location
- Separate Storage Unit
- Bicycle Storage
- Comfort Cooling
- Concierge
- Gated Development



Suffolk Street,
London, SW1Y



FOURTH FLOOR

TOTAL APPROX. FLOOR AREA 1182 SQ. FT. (109.8 SQ. M.)

Dexters

Fitzrovia
66 Goodge Street, London,
W1T 4NG
Lettings
020 7067 2402

Energy Rating: B. We aim to make our particulars both accurate and reliable. However they are not guaranteed; nor do they form part of an offer or contract. If you require clarification on any points then please contact us, especially if you're traveling some distance to view. Please note that appliances and heating systems have not been tested and therefore no warranties can be given as to their good working order.

 **RICS** | Regulated
Estate Agent
and Letting Agent

dexters.co.uk