



Spring Gardens, SW1A

£995 Per week

Dexters



Spring Gardens, London, SW1A

A stunning two bedroom top floor split-level apartment in this sought after period building overlooking Trafalgar square.

The property offers a luxurious living space, with newly fitted separate kitchen, incredible storage and two generous bedrooms on the top floor of the apartment each with their own bathroom.

Located next to Charing Cross station, this apartment would work extremely well for companies and professionals who need the benefits of excellent transport.

Features

Newly Refurbished
Incredible Views
Split-Level Apartment
Lift Access
Great Storage
Excellent Location



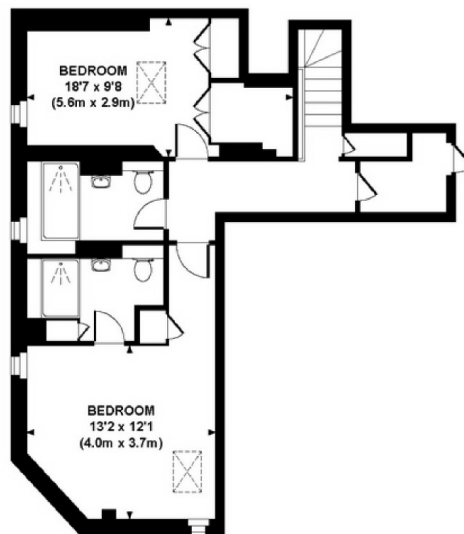




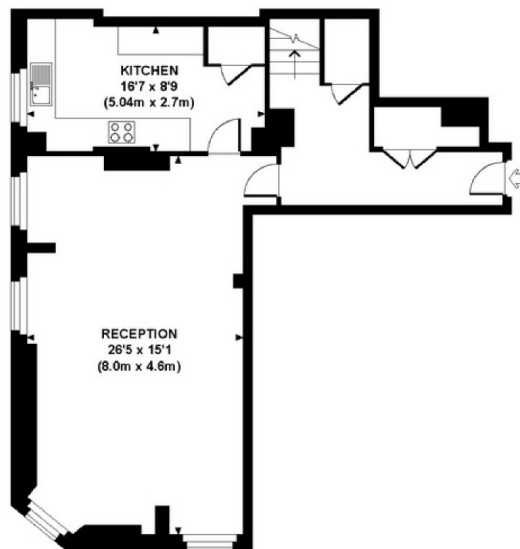
Spring Gardens, London, SW1A

SPRING GARDENS, SW1A

Approx. gross internal area
1263 Sq Ft. / 117.3 Sq M.
Representation of current layout.
Not to scale.



FOURTH FLOOR



THIRD FLOOR

Dexters

Fitzrovia
66 Goadge Street, London,
W1T 4NG

Lettings
020 7067 2402

Energy Rating: G. We aim to make our particulars both accurate and reliable. However they are not guaranteed; nor do they form part of an offer or contract. If you require clarification on any points then please contact us, especially if you're traveling some distance to view. Please note that appliances and heating systems have not been tested and therefore no warranties can be given as to their good working order.

 **RICS** | Regulated
Estate Agent
and Letting Agent

dexters.co.uk