



Suffolk Street, SW1Y

£1,600 Per week

Dexters



Suffolk Street, SW1Y

A luxurious two bedroom, two bathroom apartment split over the fourth and fifth floor of the gated new Hobhouse Court development with balcony and views of the London eye.

The development is designed by Arquitectonica with on site porter, air conditioning, communal courtyard, storage units and bicycle storage in an unrivalled prestigious location.

Hobhouse Court is located less than 50 meters from Trafalgar Square and is between Mayfair, Leicester Square and St James's Park. Leicester Square Station, Piccadilly Circus and Charing Cross Station are all located within walking distance of the development.

Features

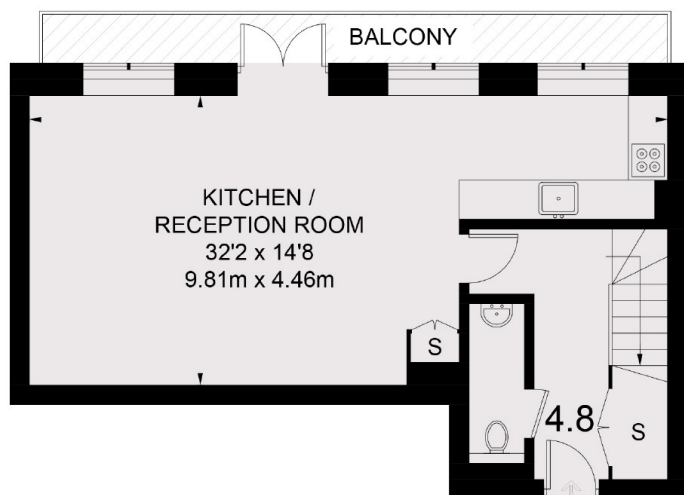
- Unrivalled Location
- Two Large Double Bedrooms
- Bicycle Storage
- Comfort Cooling
- Concierge
- Gated Development



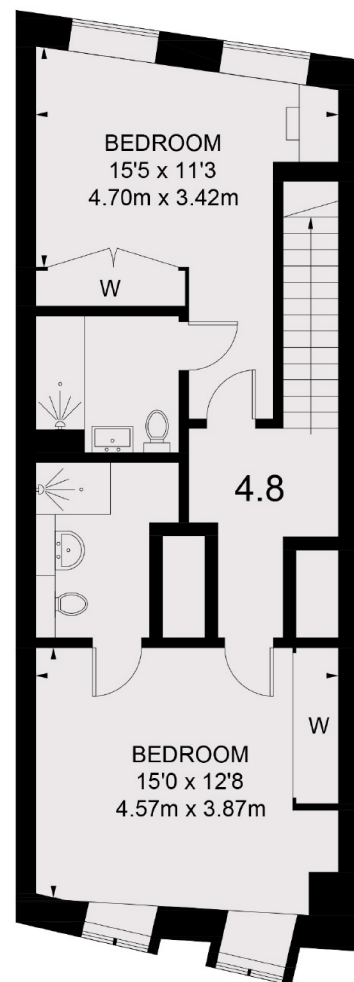




Suffolk Street, London, SW1Y



FOURTH FLOOR



FIFTH FLOOR

TOTAL APPROX. FLOOR AREA 1130 SQ. FT. (105 SQ. M.)
(EXCLUDING VOID)

Dexters

Fitzrovia & Covent Garden
66 Goodge Street
London
W1T 4NG
Lettings
020 7067 2402

Energy Rating: B. We aim to make our particulars both accurate and reliable. However they are not guaranteed; nor do they form part of an offer or contract. If you require clarification on any points then please contact us, especially if you're traveling some distance to view. Please note that appliances and heating systems have not been tested and therefore no warranties can be given as to their good working order.

 **RICS** | Regulated
Estate Agent
and Letting Agent

dexters.co.uk