



## Kensington Court, W8

£4,699,000

**Dexters**



## Kensington Court, London, W8

A well presented four bedroom lateral apartment situated on the first floor (with lift) of this well maintained red brick, portered mansion block.

This large family apartment is flooded with natural light and benefits from high ceilings throughout.

To one side of the apartment is the kitchen, reception and dinning room with balcony. The bedrooms and bathrooms are to the other side with a large bay window from the master bedroom.

The property enjoys attractive views over the communal gardens and combines the perfect balance of living and entertaining space making the perfect investment or family home.

Kensington Court is located to the south of Kensington High Street. The area is well served by excellent amenities and High St Kensington station near by.

### Features

- First Floor Lateral Space
- Four Bedrooms
- Communal Gardens
- Porter
- Lift
- High St. Kensington Station



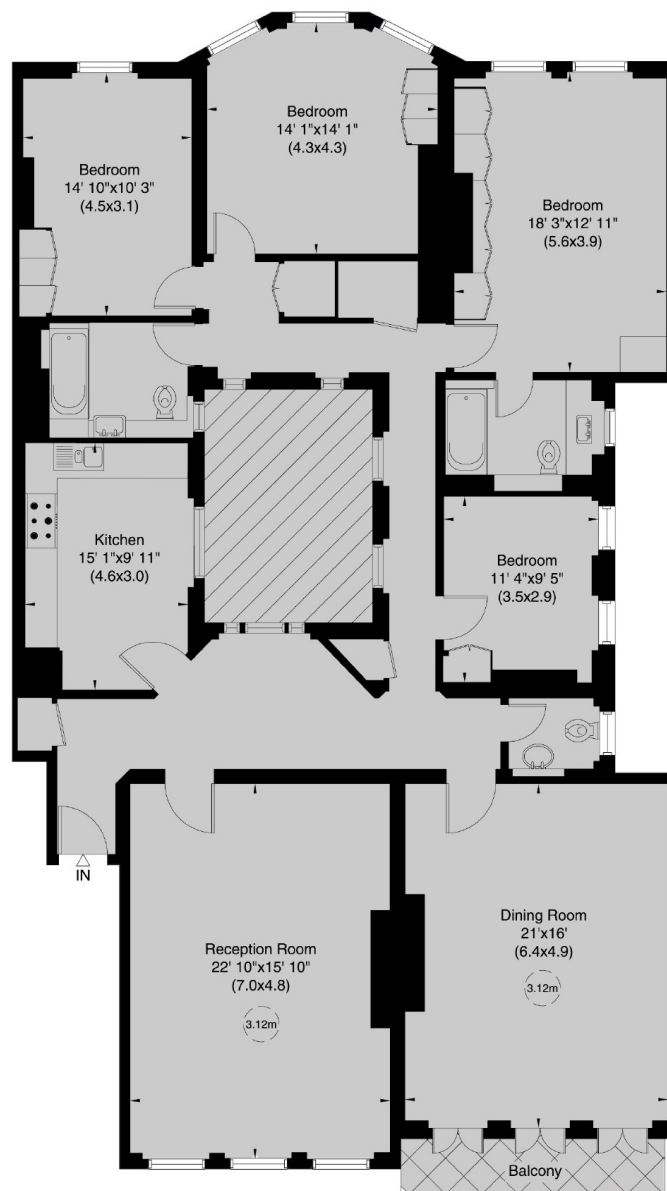








## Kensington Court, London, W8



First Floor

Gross internal area (approx.)  
201 Sq m (2166 Sq ft)

**Dexters**

Knightsbridge  
Petersham House, 29  
Harrington Road, London, SW7

Sales  
020 7838 0108

Energy Rating: D. We aim to make our particulars both accurate and reliable. However they are not guaranteed; nor do they form part of an offer or contract. If you require clarification on any points then please contact us, especially if you're traveling some distance to view. Please note that appliances and heating systems have not been tested and therefore no warranties can be given as to their good working order.

 **RICS** | Regulated  
Estate Agent  
and Letting Agent

[dexters.co.uk](https://www.dexters.co.uk)