

Basil Street, SW3

£525,000

A newly refurbished studio flat in the heart of Knightsbridge. The kitchenette can be tucked away within the smartly designed space and the separate shower room is also finished to a very high standard.

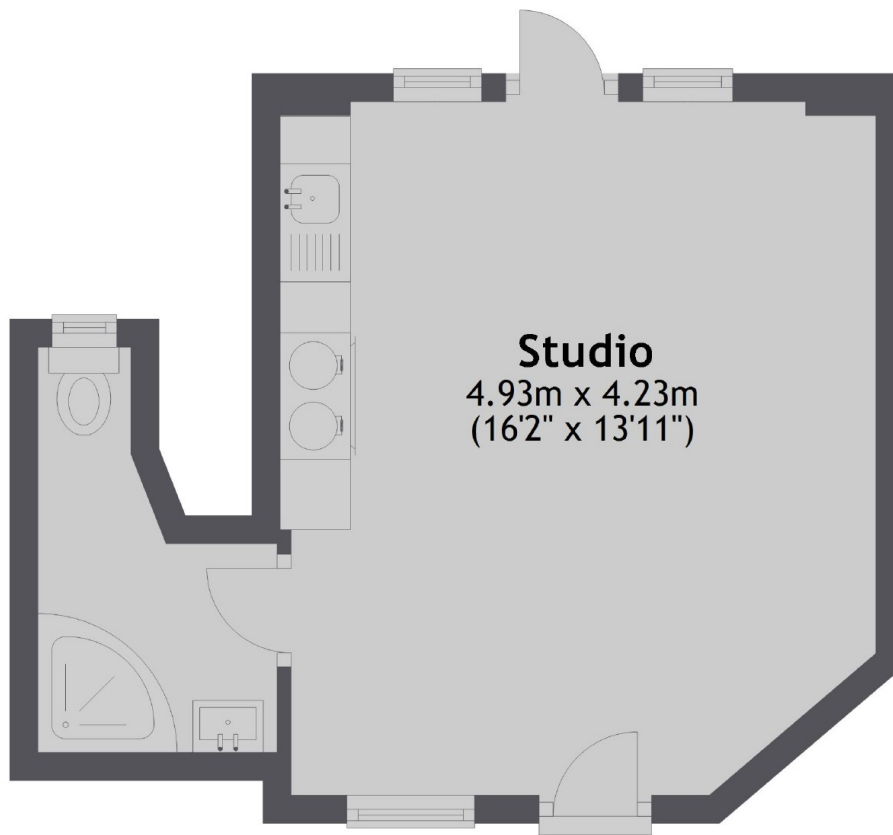
Jefferson House is a well kept portered building located on Basil Street between Sloane Street and Hans Crescent close to an abundance of shops and restaurants including the famous "Harrods". Perfect for a rental investor or a convenient pied-a-terre.

Features

Newly Refurbished
Portered Block
South East Facing
Prime Location
Long Lease
Knightsbridge Station

Basil Street,
London, SW3

Lower Ground Floor



Total area: approx. 23.9 sq. metres (257.1 sq. feet)

Contact

To arrange a viewing call our office on the number below or visit our website.



Energy Rating: D. We aim to make our particulars both accurate and reliable. However they are not guaranteed; nor do they form part of an offer or contract. If you require clarification on any points then please contact us, especially if you're traveling some distance to view. Please note that appliances and heating systems have not been tested and therefore no warranties can be given as to their good working order.