



South Kensington, SW7

£4,700,000

Dexters



## Stanhope Mews East, London, SW7

A well-proportioned freehold mews house offering spacious living accommodation over four floors, situated in the highly desirable Stanhope Mews East.

This well-located home is finished to the highest standard throughout. Entering on the ground floor there is a large open plan kitchen/reception room with dining area and Miele kitchen.

The first floor comprises a large master bedroom with adjoining dressing room, and a spacious en suite with large bath and separate rain shower. The second floor has two further double bedrooms and a shared bathroom.

There is a home cinema on the lower ground level, along with a utility room, study, and guest bathroom, and the top floor leads onto a large decked roof terrace with jacuzzi and wall mounted television.

Stanhope Mews East is a quiet road located in the middle of South Kensington and Gloucester Road stations, close to an array of shops, restaurants and bars. Hyde Park is nearby.

### Features

- Freehold House
- Three Bedrooms
- Three Bathrooms
- Home Cinema
- Roof Terrace
- Gloucester Road Station



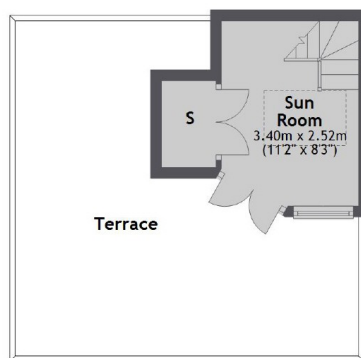








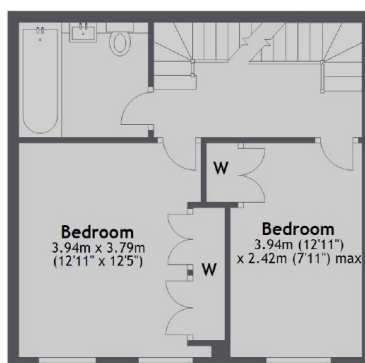
# Stanhope Mews East, London, SW7



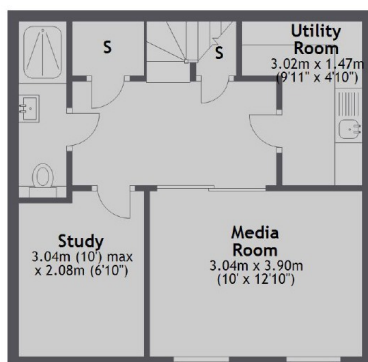
Third Floor



First Floor



Second Floor



Lower Ground Floor



Ground Floor

Total area: approx. 165.3 sq. metres (1779.5 sq. feet)