



1 Jersey Street, Ancoats - Asking Price Of £240,000

Julie Twist Properties are delighted to present this perfectly proportioned two bed on Jersey Street in the ever popular area of Ancoats. Situated on the fourth floor, the property consists of two good sized double bedrooms, a main bathroom and a lovely sized open plan kitchen, dining and living space. The whole apartment is in fantastic condition throughout and is absolutely ready to move into as it is. Both bedrooms and the living space have floor to ceiling windows offering plenty of natural light.

Jersey Street is a quiet street in Ancoats just seconds away from Cutting Room Square where many of Ancoats hip and trendy restaurants and bars are located. Ancoats over the last 5 year has become one of, if not the most, desirable locations in Manchester City Centre. A perfect blend of history and regeneration, with cobbled streets, canals and converted mills and now with some of the very best restaurants and eateries Manchester has to offer. Piccadilly Station is only a ten minute walk away, along with bus and Metrolink connections making travelling to other parts of the city centre and much further afield an easy feat.

- Two Double Bedrooms
- Ancoats Location
- Close to Piccadilly
- Fourth Floor
- EWS1 Sign Off In Place
- Secure Development
- Open Plan Living Space
- Seconds to Cutting Room Square



GENERAL

Rental Yield: 5.5% (Based on expected rental of £1100pcm)
Service Charge: £99 pcm
Ground Rent: £20 pcm
Lease: 125 years from 01.09.2014
Management Company: Beech Housing
Council Tax Band: C, Aprx £1533.07pa
There will be an onward chain with this property.

HALLWAY

Laminate flooring, intercom entry phone, cupboard housing boiler and ceiling lighting.

LIVING ROOM

Double glazed window, laminate flooring, wall heater, phone/tv point and ceiling lighting.

KITCHEN

Open plan kitchen comprising free-standing fridge/freezer, space for washing machine, built-in oven, four ring hob with mixer tap over, stainless steel sink with mixer tap and drainer, tiled splashback, lino flooring and ceiling lighting.

MASTER BEDROOM

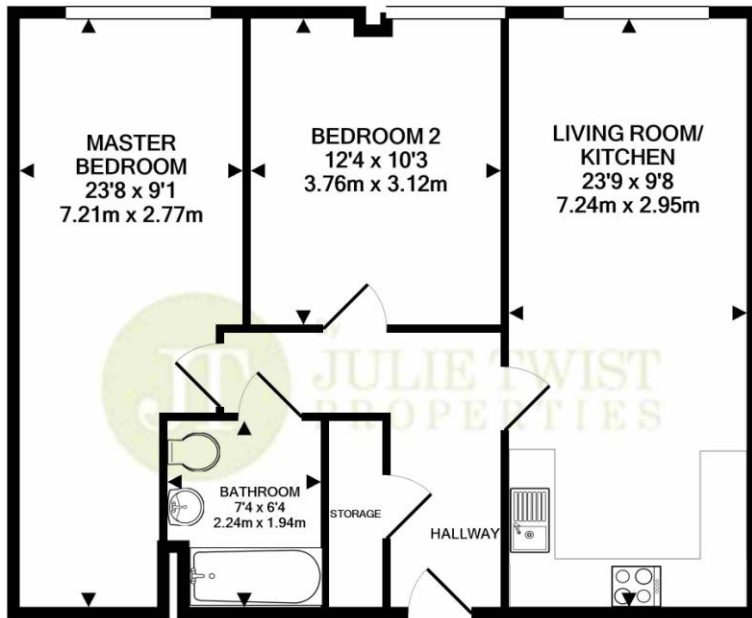
Double glazed window, carpeted flooring, wall heater and two ceiling lights.

BEDROOM 2

Double glazed window, carpeted flooring, wall heater and ceiling lighting.

BATHROOM

Three piece modern bathroom comprising bath with shower attachment over, WC, sink with mixer tap, heated towel rail, wall mirror and ceiling lighting.



TOTAL APPROX. FLOOR AREA 687 SQ.FT. (63.9 SQ.M.)

Whilst every attempt has been made to ensure the accuracy of the floor plan contained here, measurements of doors, windows, rooms and any other items are approximate and no responsibility is taken for any error, omission, or mis-statement. This plan is for illustrative purposes only and should be used as such by any prospective purchaser. The services, systems and appliances shown have not been tested and no guarantee as to their operability or efficiency can be given
Made with Metropix ©2020

IMPORTANT NOTE TO PURCHASERS: We endeavour to make our sales particulars accurate and reliable, however, they do not constitute or form part of an offer or any contract and none is to be relied upon as statements of representation or fact. The services, systems and appliances listed in this specification have not been tested by us and no guarantee as to their operating ability or efficiency is given. All measurements have been taken as guide to prospective buyers only, and are not precise. If floor plans where included, these may not be to scale and accuracy is not guaranteed. If you require clarification or further information on any points, please contact us, especially if you are travelling some distance to view.

