



## Great Northern Tower, Manchester - Offers Over £280,000

Julie Twist properties presents this two bedroom, two bathroom apartment in the sought after Great Northern Tower. Positioned on the fourth floor, this is a spacious and well-proportioned apartment and has two good size double bedrooms with the master bedroom benefiting from its own en-suite. There is a main bathroom off the hallway as well as two storage cupboards. The main living space has an open plan fully fitted kitchen with a large breakfast bar and living room. It comes complete with its own private balcony, perfect for taking in Manchester City Centre hustle and bustle.

The Great Northern Tower is situated in the middle of Deansgate, in one of the best locations on offer in Manchester. It's walking distance to all the city centre train stations and St Peter's Square Metrolink stop is under 5 minutes' walk away. Deansgate itself has numerous restaurants, bars and cafes on offer and just opposite the development.

- Balcony
- Two Double Bedrooms
- 4th Floor
- 24 Hour Concierge
- Deansgate Location
- Two Bathrooms
- 5 Min Walk to Metrolink
- Close to Spinningfields

**DESCRIPTION**

Fire safety works are required on the Great Northern Tower to bring the development to a mortgageable EWS1 rating. Government funding is in place for the remedial works to be carried out - Mortgage buyers welcome. Please contact us for mortgage advice!

**GENERAL**

Rental Yield: 5.57% (based on an expected rental amount of £1300pcm)  
 Service Charge: £3000 per annum  
 Ground Rent: £275 per annum  
 Lease: 150 years (less 1 day) from 31 December 2003  
 Square Footage: 811sq.ft / 75.3sq.m  
 Council Tax Band: E  
 Management Company: Zenith

**HALLWAY**

Laminate flooring, wall lights, access to storage cupboard with plumbing for washing machine, access to cupboard housing the boiler, wall mounted heater, intercom.

**LIVING ROOM**

Double glazed sliding door onto balcony, carpeted flooring, wall mounted heaters, phone/TV point, wall lights and ceiling lights.

**KITCHEN**

Open plan to the living area, the kitchen comprises wall and base units, fridge, freezer, integrated dishwasher, built-in oven with four ring hob and extractor over, stainless steel sink with mixer tap and drainer, laminate flooring, spotlights and extractor.

**MASTER BEDROOM**

Double glazed window, carpeted flooring, wall mounted heater, and ceiling lights and entrance to the ensuite.

**ENSUITE**

Accessed via the master bedroom, the ensuite comprises of a shower cubicle, WC, wash hand basin with mixer tap, partially tiled walls, tiled flooring, extractor and spotlights.

**BEDROOM 2**

Double glazed window, laminate flooring, wall mounted heater and ceiling lights.

**MAIN BATHROOM**

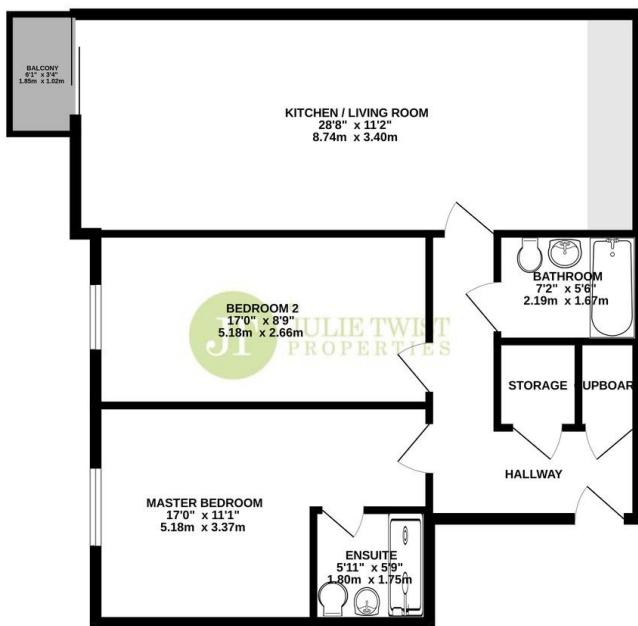
Accessed via the hallway, a three piece bathroom comprising bath with shower attachment over, WC, sink with mixer tap, heated towel rail, partially tiled walls, tiled flooring, extractor and spotlights.

**OUTSIDE SPACE**

This property benefits from a private balcony accessed via the living room.



FOURTH FLOOR  
 811 sq.ft. (75.3 sq.m.) approx.



TOTAL FLOOR AREA: 811 sq.ft. (75.3 sq.m.) approx.  
 Whilst every attempt has been made to ensure the accuracy of the floorplan contained here, measurements of floor, window, doors and any other items are approximate and no responsibility is taken for any errors, omissions or mis-statements. This plan is for illustrative purposes only and should be used as a guide by any prospective purchaser. The services, systems and appliances shown have not been tested and no guarantee is given in their operability or efficiency over time.  
 Made with Metaphor 12/2023

**IMPORTANT NOTE TO PURCHASERS:** We endeavour to make our sales particulars accurate and reliable, however, they do not constitute or form part of an offer or any contract and none is to be relied upon as statements of representation or fact. The services, systems and appliances listed in this specification have not been tested by us and no guarantee as to their operating ability or efficiency is given. All measurements have been taken as guide to prospective buyers only, and are not precise. If floor plans where included, these may not be to scale and accuracy is not guaranteed. If you require clarification or further information on any points, please contact us, especially if you are travelling some distance to view.

