



59 Orwell Drive, Didcot, OX11 7RX

59 Orwell Drive, Didcot, OX11 7RX

£375,000



A four bedroom detached property situated in the popular Ladygrove development, with the advantage of a south facing rear garden. The property is approached via an entrance hall giving access to a conveniently located downstairs cloakroom. The sitting dining room is ample measuring over 23ft in length with patio doors leading out to the rear garden. The newly re-fitted modern kitchen is a nice addition and comprises of wall and low level units, with built in gas hob , electric oven and extractor fan above, there is a door out to the rear patio and an archway through to a utility room, with plumbing for a washing machine and space for a tumble dryer. To the first floor are four bedrooms, three of which are double bedrooms and one single, the master bedroom boasts an en-suite shower room and there is also a family bathroom. To the rear is a sunny south facing garden laid to lawn & enclosed by a wall and panel fencing. To the side is a driveway leading to a garage with light and power.



## Description

A four bedroom detached property situated in the popular Ladygrove development, with the advantage of a south facing rear garden. The property is approached via an entrance hall giving access to a conveniently located downstairs cloakroom. The sitting dining room is ample measuring over 20ft in length with patio doors leading out to the rear garden. The newly re-fitted modern kitchen is a nice addition and comprises of wall and low level units, with built in gas hob, oven and extractor fan above, there is a door out to the rear patio and an archway through to a useful utility room, with plumbing for a washing machine and space for a tumble dryer. To the first floor are four bedrooms, three of which are double bedrooms and one single, the master bedroom boasts an en-suite shower room and there is also a family bathroom.

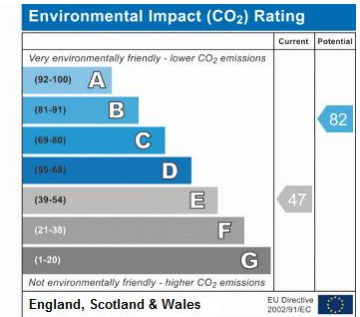
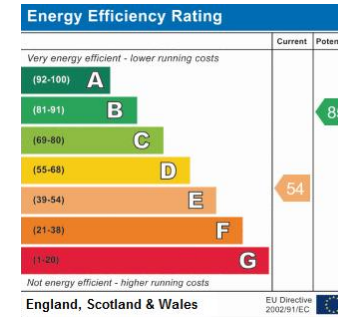
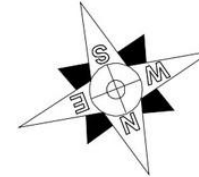
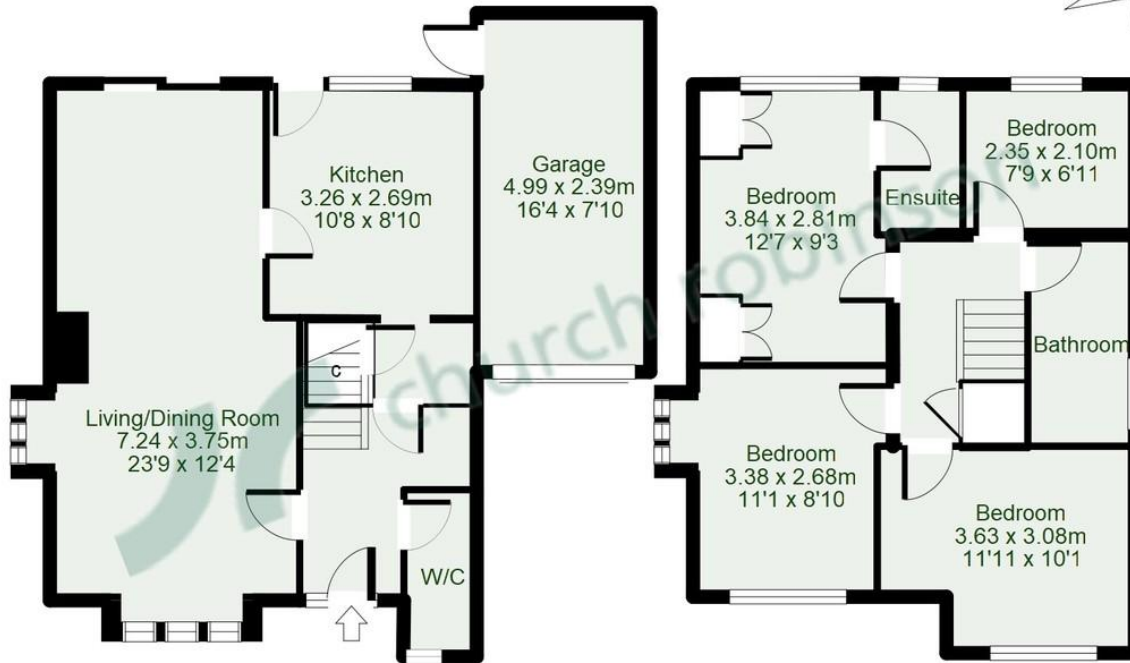
To the rear is a sunny south facing garden laid to lawn & enclosed by a wall and panel fencing. To the side is a driveway leading to a garage with light and power.



Viewings recommended and can be arranged by  
calling Church Robinson estate agents  
on 01235 816222.



# 59 Orwell Drive, Didcot, OX11 7RX



This floor plan illustration is only an approximation of measurements, existing structures and features, and is provided for convenience and visual reference only. While every effort toward accuracy was made, SPS Ltd nor its agents or employees can be held liable about the information presented in this floor plan sketch. The buyer should always confirm measurements using their own sources prior to purchasing/renting as this floor plan is only approximate. Copyright SPS Ltd. Copied Plan

## Important Notice

Church Robinson for themselves and for the Vendors of this property, whose agents they are give notice that:-

1. The particulars are intended to give a fair and substantially correct overall description for the guidance of intending purchasers and do not constitute part of an offer or contract. Prospective purchasers and lessees ought to seek their own professional advice.
2. All descriptions, dimensions, areas, reference to condition and necessary permissions for use and occupation and other details are given in good faith, and are believed to be correct, but any intending purchasers should not rely on them as statements or representations of fact, but must satisfy themselves by inspection or otherwise as to the correctness of each of them.
3. No person in the employment of Jones Robinson has any authority to make or give representation or warranty whatsoever in relation to this property on behalf of Church Robinson, nor enter into any contract on behalf of the vendor.
4. No responsibility can be accepted for any expenses incurred by intending purchasers in inspecting properties which have been sold, let or withdrawn.

All measurements are approximate. While we endeavour to make our sales particulars accurate and reliable, if there is any point which is of particular importance to you, please contact this office and we will be pleased to check the information for you, particularly if contemplating travelling some distance to view the property. Viewing strictly by confirmed appointment with Church Robinson. 01235 816222. Notice is given that all curtains, carpets, blinds, equipment, light fittings and fixtures, fitted or not are deemed to be removable by the Vendor unless specifically itemised in the sales particulars.