



Esher

OIEO £600,000

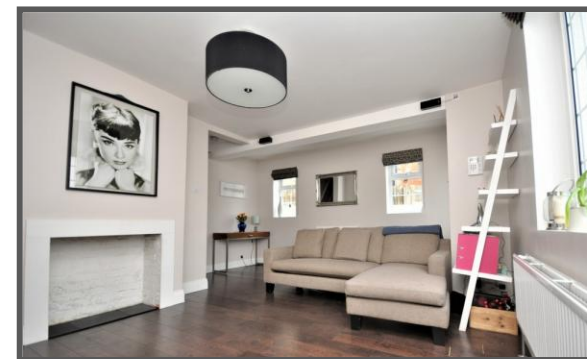
Esher

A beautiful two-bedroom, semi-detached period cottage in a popular and charming road only moments away from Esher High Street. This extended cottage has been renovated throughout to a high specification.

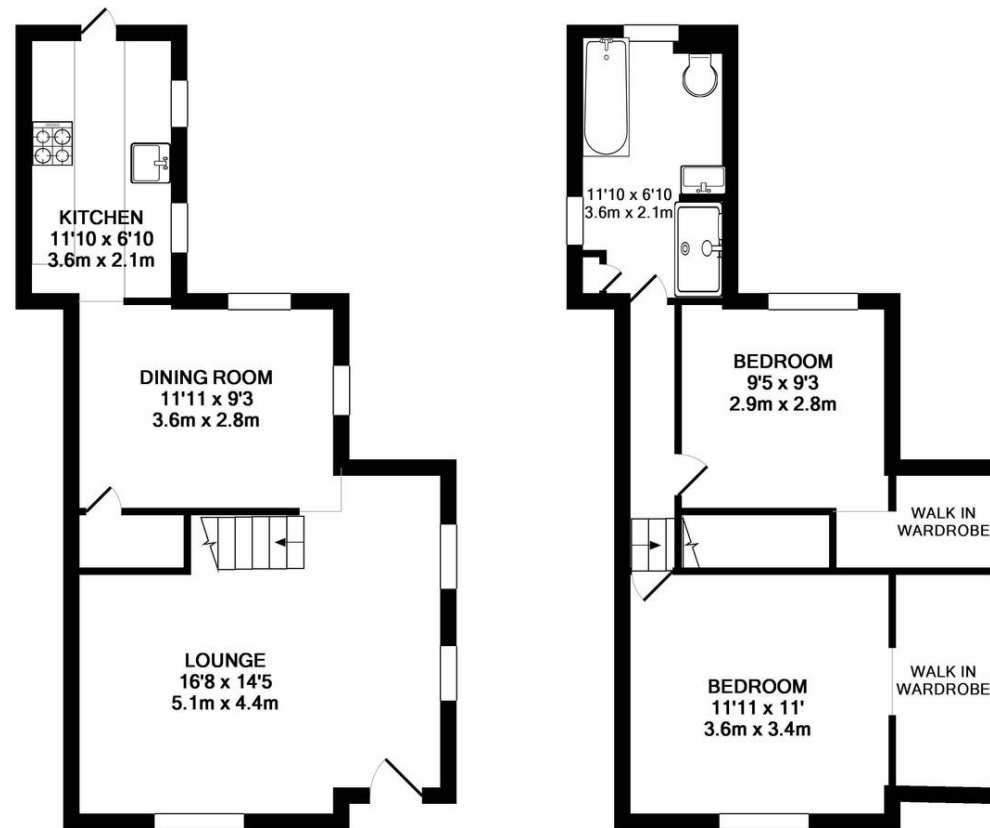
The ground floor comprises of two light and airy reception rooms, a modern fitted kitchen with direct access to the private rear garden. Upstairs offers two double bedrooms with walk in wardrobes and a smart four-piece family bathroom.

The property is located a stone throw away from Esher High Street which has an array of boutique shops, coffee shops, Everyman Cinema and Sandown Race Course. The property is also 1 mile from Esher Mainline Train Station.

- Semi-Detached
- Extended
- Renovated Throughout
- Smart Four Piece Bathroom Suite
- Modern Kitchen
- High Specification
- Garden
- EPC Rating - C
- Council Tax Band - E



Floor Plan



GROUND FLOOR
APPROX. FLOOR
AREA 422 SQ.FT.
(39.2 SQ.M.)

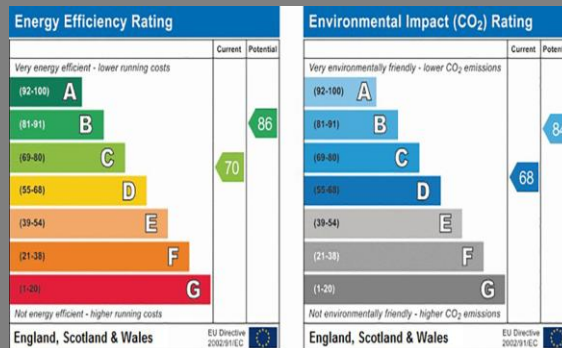
1ST FLOOR
APPROX. FLOOR
AREA 419 SQ.FT.
(39.0 SQ.M.)

TOTAL APPROX. FLOOR AREA 841 SQ.FT. (78.2 SQ.M.)

Whilst every attempt has been made to ensure the accuracy of the floor plan contained here, measurements of doors, windows, rooms and any other items are approximate and no responsibility is taken for any error, omission, or mis-statement. This plan is for illustrative purposes only and should be used as such by any prospective purchaser. The services, systems and appliances shown have not been tested and no guarantee as to their operability or efficiency can be given
Made with Metropix ©2018

Location

The property is located a stone throw away from Esher High Street which has an array of boutique shops, coffee shops, Everyman Cinema and Sandown Race Course. The property is also 1 mile from Esher Mainline Train Station.



We aim to make our particulars both accurate and reliable but they are not guaranteed, nor do they form part of an offer or contract.

If you require clarification of any points then please contact us especially if you are travelling some distance to view.

Please note that appliances and heating systems have not been tested and therefore no warranties can be given as to their good working order.