

Bloomsbury, WC1N

£1,550,000

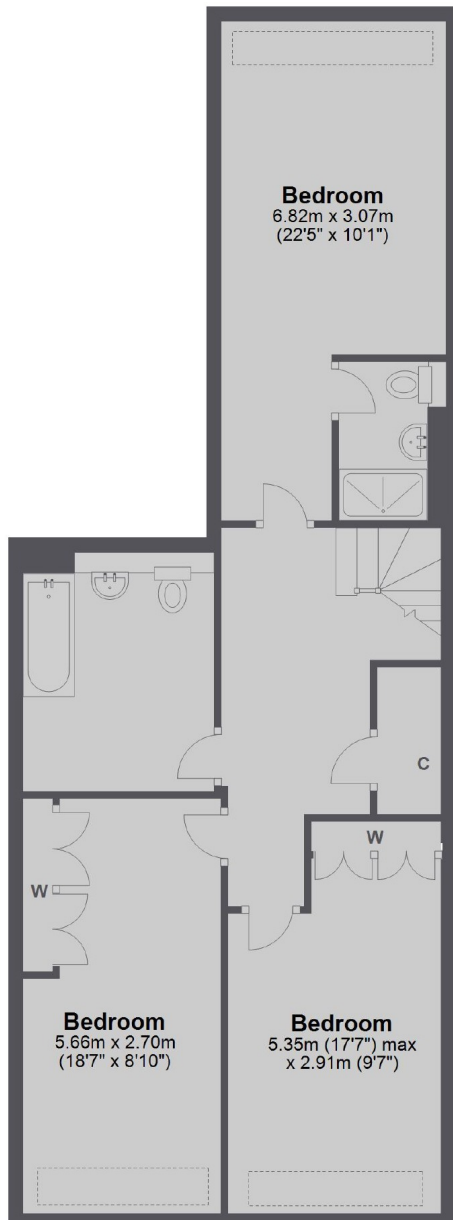
A larger than average three bedroom, split level apartment on a quiet mews on the edge of Bloomsbury. The apartment has a separate kitchen and reception, spacious bedrooms and stylish design accents such as cast iron radiators.

Features

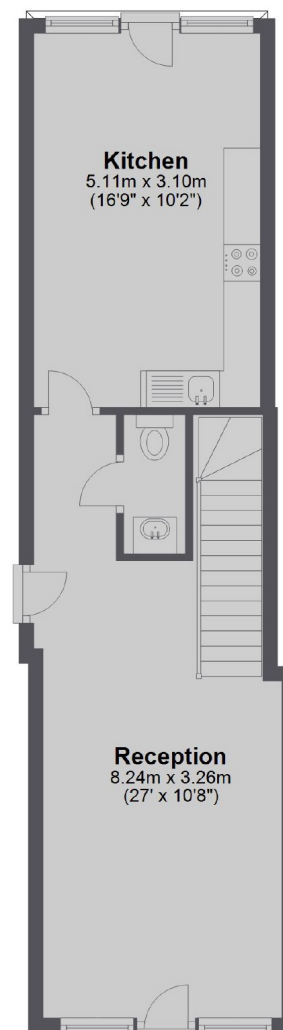
- Wooden floors in living spaces
- Video entrance phone system
- Handcrafted kitchens
- Excellent transport links
- Top universities in the area
- City centre

King's Mews, London, WC1N

Basement



Ground Floor



Total area: approx. 116.3 sq. metres (1251.3 sq. feet)

Contact

To arrange a viewing call our office on the number below or visit our website.



Energy Rating: TBC. We aim to make our particulars both accurate and reliable. However they are not guaranteed; nor do they form part of an offer or contract. If you require clarification on any points then please contact us, especially if you're traveling some distance to view. Please note that appliances and heating systems have not been tested and therefore no warranties can be given as to their good working order.