

## Bloomsbury, WC1N

£995,000

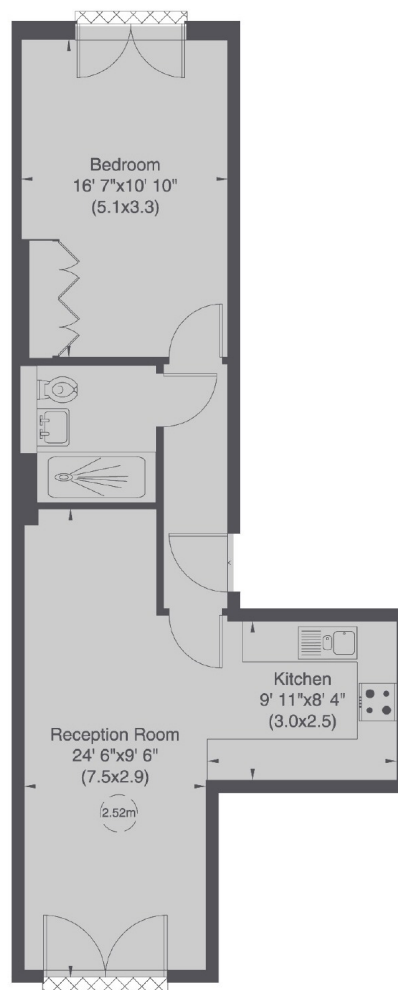
A first floor, one bedroom apartment on a quiet mews on the edge of Bloomsbury. The kitchen reception room has a juliet balcony looking on to the mews whilst a spacious bedroom sits to the rear of the property.

### Features

- Wooden floors in living spaces
- Video entrance phone system
- Handcrafted kitchens
- Excellent transport links
- City centre
- Top universities in the area

## King's Mews, London, WC1N

### First Floor



Gross internal area (approx.)  
55 Sq m (592 Sq ft)

### Contact

To arrange a viewing call our office on the number below or visit our website.



Energy Rating: TBC. We aim to make our particulars both accurate and reliable. However they are not guaranteed; nor do they form part of an offer or contract. If you require clarification on any points then please contact us, especially if you're traveling some distance to view. Please note that appliances and heating systems have not been tested and therefore no warranties can be given as to their good working order.