

## Ebury Apartments, Sutherland Street, SW1V

£1,445,000

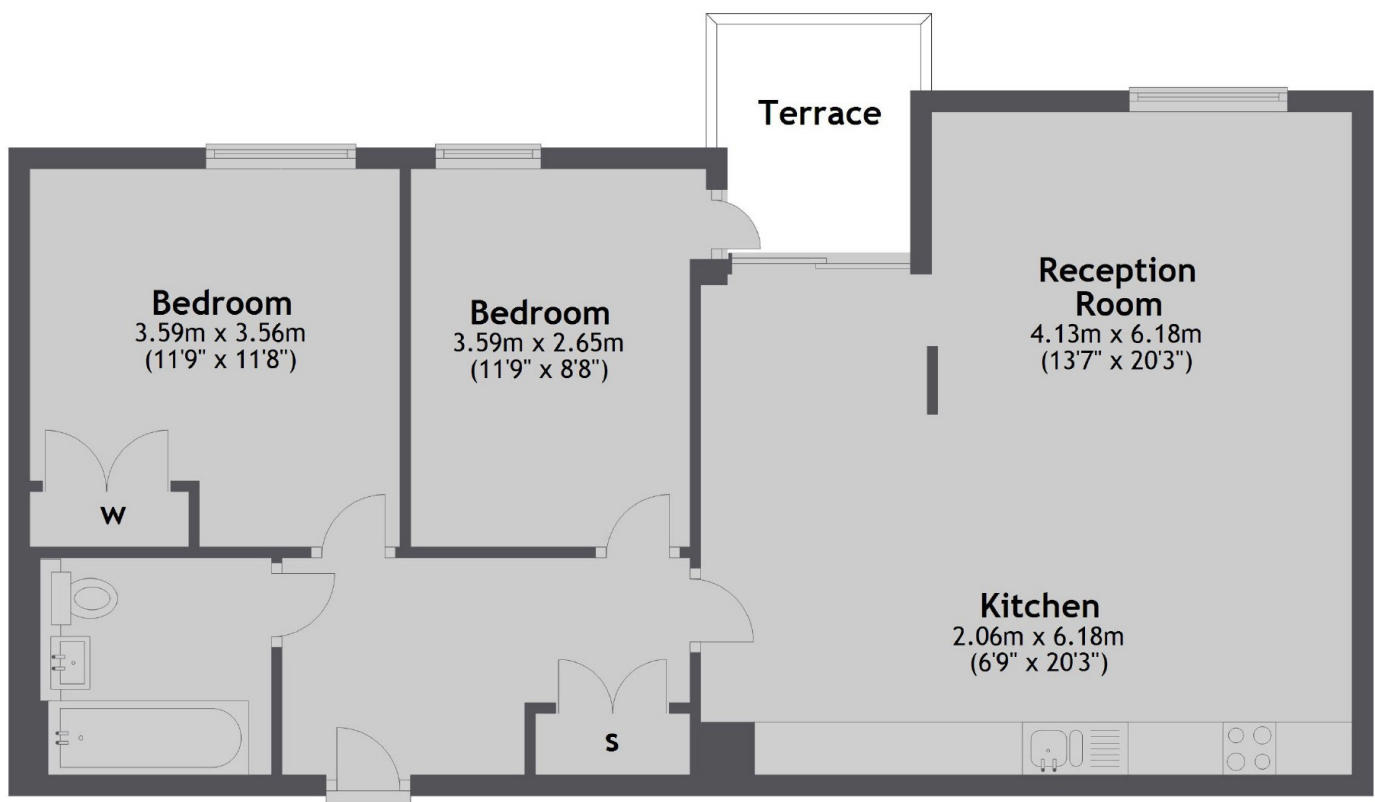
A landmark development in SW1, Ebury Place embodies a luxurious, contemporary style that epitomises Central London living. Situated a short walk from the iconic streets of Sloane Square, Chelsea and Belgravia.

Ebury Place benefits from a prime position next to Victoria Station: an integral gateway for travel across the capital, the south east and an express route to Gatwick Airport.

### Features

- Central Zone 1 location
- Concierge
- Luxury Development
- Parking
- Balconies
- Integrated Appliances
- Photos are indicative of the finished home.

## Sutherland Street, London, SW1V



Total area: approx. 72.2 sq. metres (777.1 sq. feet)

### Contact

To arrange a viewing call our office on the number below or visit our website.



Energy Rating: . We aim to make our particulars both accurate and reliable. However they are not guaranteed; nor do they form part of an offer or contract. If you require clarification on any points then please contact us, especially if you're traveling some distance to view. Please note that appliances and heating systems have not been tested and therefore no warranties can be given as to their good working order.