



Strand Chambers, WC2R

£2,300,000

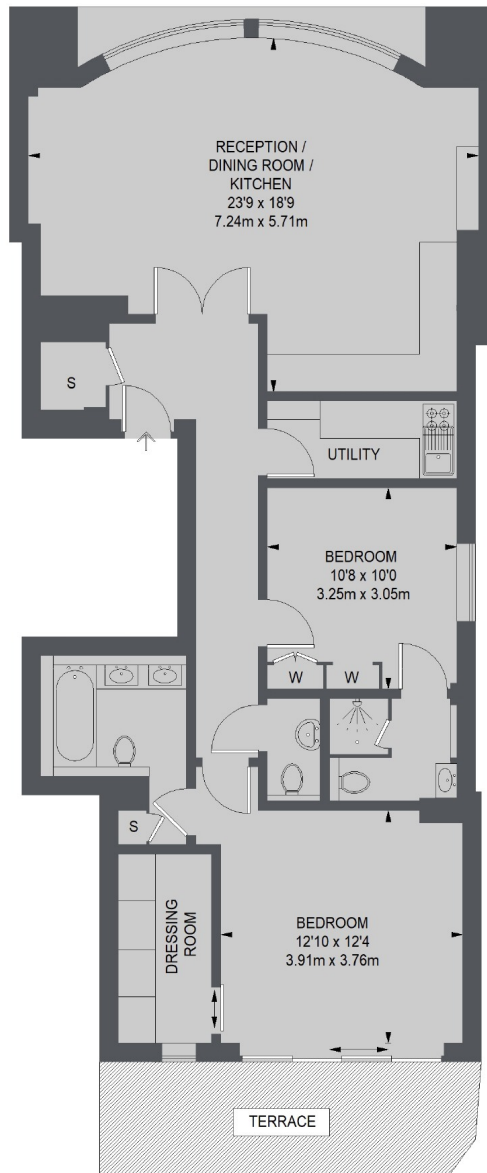
A first floor two bedroom, two bathroom apartment offering living room views over the architecturally striking Royal Courts of Justice. Both bedrooms are en suite and the master bedroom also comes with a dressing room and private terrace.

Located in the heart of the West End, Strand Chambers is within walking distance of Covent Garden. Temple Tube is close by servicing District and Circle Lines whilst Holborn is a short walk further for the Central Line.

Features

Comfort Cooling
High Ceilings
Central Location
Boutique Scheme
Private Terrace

Strand, London, WC2R



FIRST FLOOR

TOTAL APPROX. FLOOR AREA
1137 SQ. FT. (105.7 SQ. M.)

Contact

To arrange a viewing call our office on the number below or visit our website.



Energy Rating: D. We aim to make our particulars both accurate and reliable. However they are not guaranteed; nor do they form part of an offer or contract. If you require clarification on any points then please contact us, especially if you're traveling some distance to view. Please note that appliances and heating systems have not been tested and therefore no warranties can be given as to their good working order.