

## Strand Chambers, WC2R

£950,000

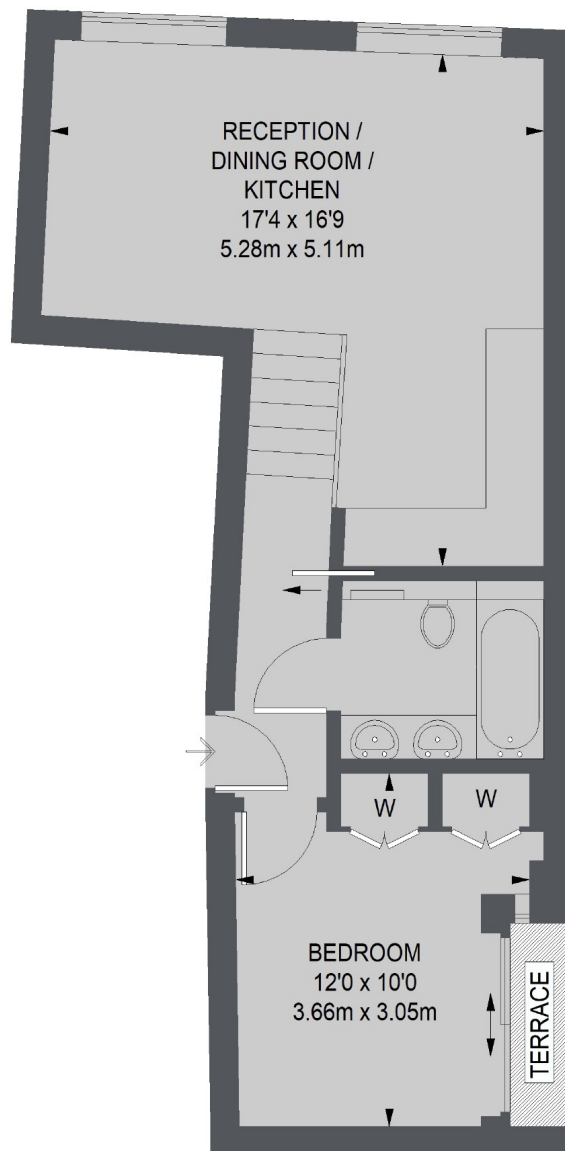
A one bedroom apartment set over the ground and raised ground floors. This flat has access to a private courtyard with views over the picturesque cobbled square of Essex Court.

Located in the heart of the West End, Strand Chambers is within walking distance of Covent Garden and its first class shopping and dining experiences as well as Theatre Land with The Aldwych and Lyceum being very close by.

### Features

- Comfort Cooling
- Views over Middle Temple
- Central Location
- Boutique Scheme
- Sash Windows
- Bespoke Cabinetry

## Strand, London, WC2R



GROUND FLOOR

TOTAL APPROX. FLOOR AREA 448 SQ. FT. (41.67 SQ. M.)

### Contact

To arrange a viewing call our office on the number below or visit our website.



Energy Rating: C. We aim to make our particulars both accurate and reliable. However they are not guaranteed; nor do they form part of an offer or contract. If you require clarification on any points then please contact us, especially if you're traveling some distance to view. Please note that appliances and heating systems have not been tested and therefore no warranties can be given as to their good working order.