



## The Atelier, Sinclair Road, W14

£1,560,000

A brand new two bed room two bathroom flat in the Atelier development. This two bed is located on the second floor with views of the communal gardens and courtyard. Finished to a high spec with integrated Siemens appliances to the kitchen.

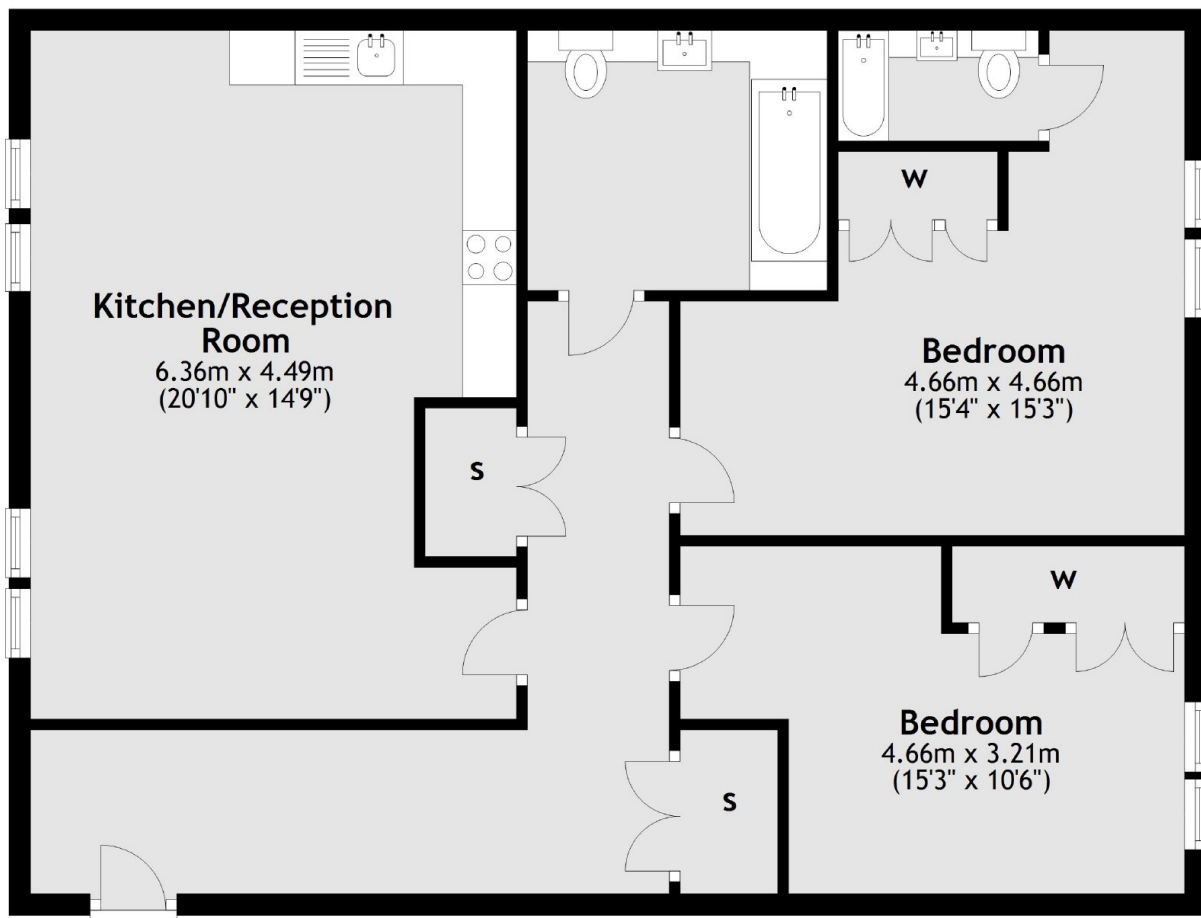
The Atelier has great transport links being only a 3 minute walk to Kensington Olympia station. With access to the District and Overground lines this means that Victoria, Bond Street and Oxford Circus are all less than 15 minutes away.

### Features

\*Show Flat Photos\*  
Gym  
Parking Available  
Cycle storage  
Cinema  
Courtyard  
Concierge

Sinclair Road,  
London, W14

## Second Floor



Total area: approx. 85.0 sq. metres (915.3 sq. feet)

### Contact

To arrange a viewing call our office on the number below or visit our website.



Energy Rating: . We aim to make our particulars both accurate and reliable. However they are not guaranteed; nor do they form part of an offer or contract. If you require clarification on any points then please contact us, especially if you're traveling some distance to view. Please note that appliances and heating systems have not been tested and therefore no warranties can be given as to their good working order.