



## Bloomsbury, WC1N

£1,425,000

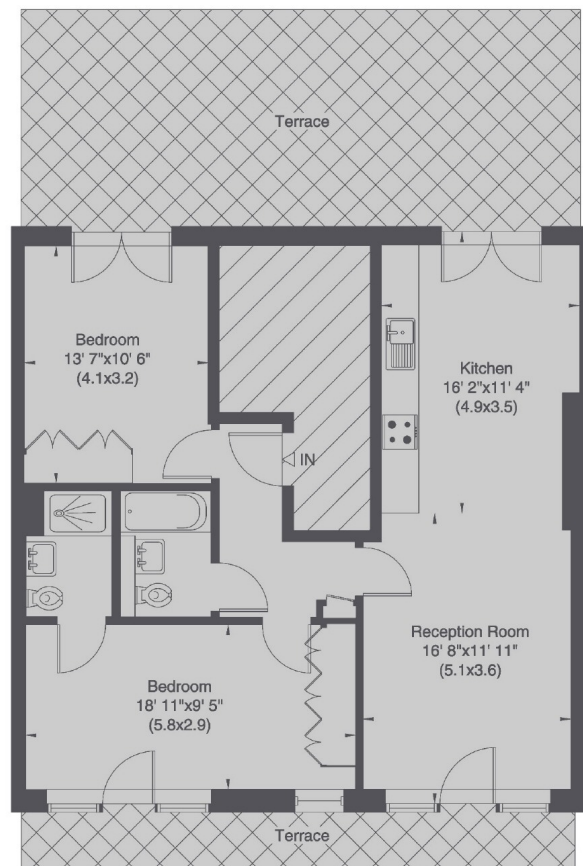
A two bedroom, top floor apartment on a quiet mews on the edge of Bloomsbury. A bright kitchen reception leads out on to a large terrace to the rear of the property. The master bedroom has an en suite with a family bathroom off the reception hall.

Situated in one of the most fashionable residential areas in central London the property is minutes from quiet garden squares and the vibrant independent boutique shops, bars and restaurants on Lambs Conduit Street. Served by excellent transport links.

### Features

- Two Bedrooms
- Top Floor
- Wooden Floors
- Large Terrace
- Handcrafted Kitchens
- Excellent Transport Links
- Photos Are Indicative To Finish

## King's Mews, London, WC1N



Second Floor

Gross internal area (approx.) 80 Sq m (863 Sq ft)

### Contact

To arrange a viewing call our office on the number below or visit our website.



Regulated  
Estate Agent  
and Letting Agent

Energy Rating: TBC. We aim to make our particulars both accurate and reliable. However they are not guaranteed; nor do they form part of an offer or contract. If you require clarification on any points then please contact us, especially if you're traveling some distance to view. Please note that appliances and heating systems have not been tested and therefore no warranties can be given as to their good working order.