



## Golden Lane, EC1Y

£802,000

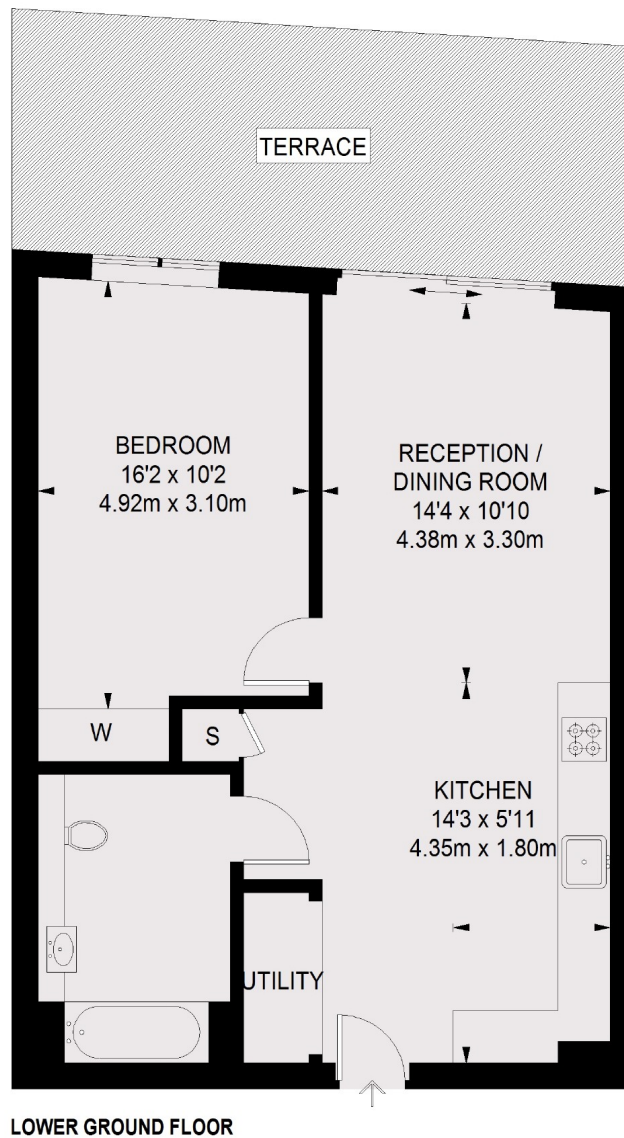
Apartment 5 is a great size one bedroom offering 615 Sq.Ft of internal living space, open plan living/ kitchen area and a private terrace overlooking the residents gardens.

The Denizen is a short distance from Farringdon Station which has access to National Rail, underground and the future Elizabeth Line taking you to Canary Wharf in 8 minutes and Heathrow in less than 35 minutes.

### Features

- Private Balcony
- 24 Hour Concierge
- Residents Lounge
- Private Cinema
- Cycle Storage
- Residents Garden

## Golden Lane, London, EC1Y



TOTAL APPROX. FLOOR AREA  
615 SQ. FT. (57.1 SQ. M.)

### Contact

To arrange a viewing call our office on the number below or visit our website.



Energy Rating: EPC. We aim to make our particulars both accurate and reliable. However they are not guaranteed; nor do they form part of an offer or contract. If you require clarification on any points then please contact us, especially if you're traveling some distance to view. Please note that appliances and heating systems have not been tested and therefore no warranties can be given as to their good working order.