

Harlesden Road, NW10

£375,000

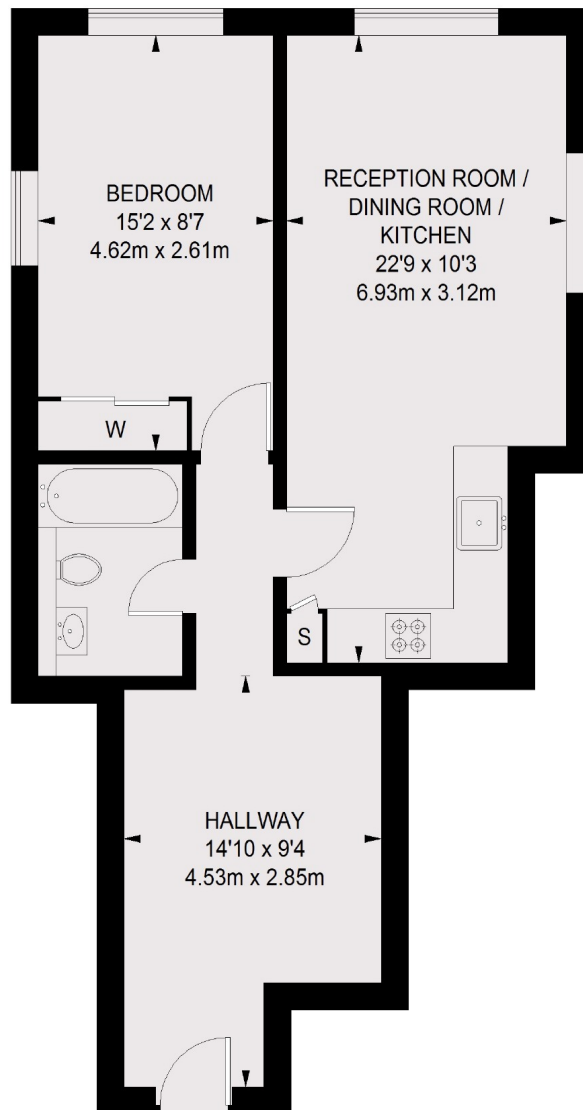
Help To Buy Available - A well laid out one bedroom apartment on the second floor of this new scheme. The flat offers over 550 sq ft and both the kitchen/ Living room and the bedroom are dual aspect allowing more light into all of the rooms giving a larger feel to the property.

Located just a walk from Willesden Green and Harlesden High Street, Belvedere house is well located for local amenities. Located between two parks, Belvedere House is an ideal property for families and first time buyers.

Features

Help To Buy
Fitted Wardrobes
Video Entry System
Residents Garden
Bike storage
Second Floor

Harlesden Road, London, NW10



SECOND FLOOR

TOTAL APPROX. FLOOR AREA
553 SQ. FT. (51.36 SQ. M.)

Contact

To arrange a viewing call our office on the number below or visit our website.



Energy Rating: . We aim to make our particulars both accurate and reliable. However they are not guaranteed; nor do they form part of an offer or contract. If you require clarification on any points then please contact us, especially if you're traveling some distance to view. Please note that appliances and heating systems have not been tested and therefore no warranties can be given as to their good working order.