



Boscombe Road, W12

£450,000

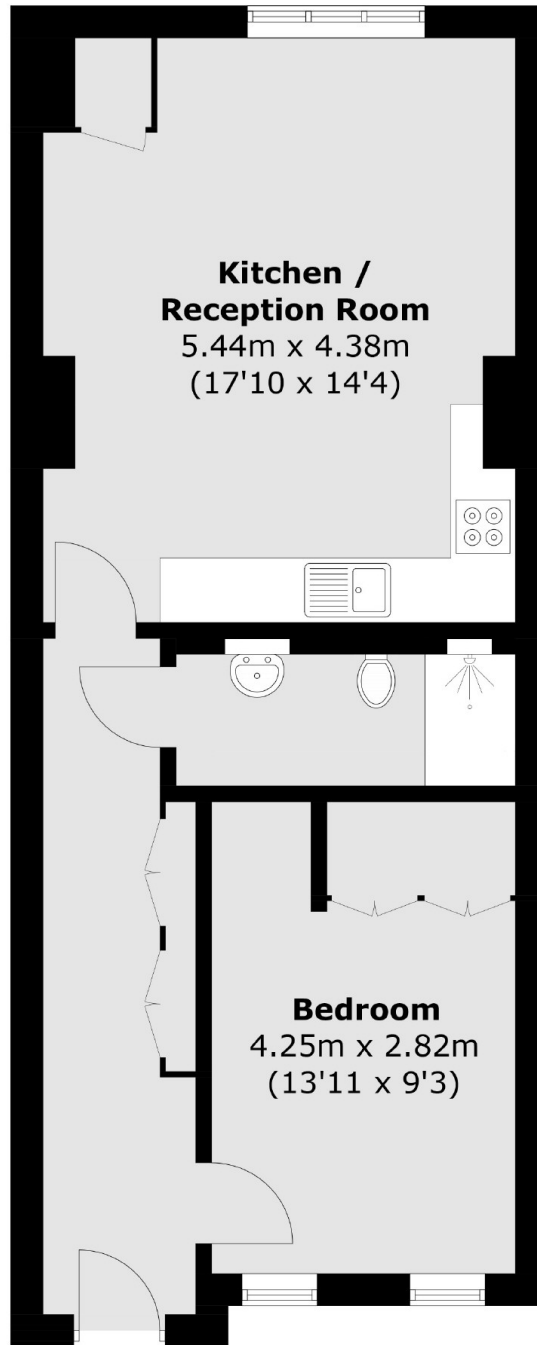
58 Boscombe Road comprises three newly converted, one and two bedroom apartments finished to a high specification, featuring Quartz kitchen work tops and floor to ceiling bathroom tiles. Each kitchen is equipped with German integrated appliances and the bedrooms fitted with bespoke wardrobes. *Images of show flat

Only a 15 minute walk to Westfield Shepherds Bush, Boscombe Road offers access to a variety of amenities including a convenience shop on the ground floor, vibrant restaurants, bars and lively entertainment less than a mile away.

Features

- Share of Freehold
- Located in Zone 3
- German Integrated Appliances
- 10 Year structural warranty
- 15 min walk to Westfield Shepherds Bush
- Private Outside Space
- High Ceilings
- Fantastic Specification
- Parking permit available for duplex flat

Boscombe Road, London, W12



Lower Ground Floor

Total area (approx.): 51.1 sq. m (550.0 sq. ft)