



Cremer Street, E2

£775,000

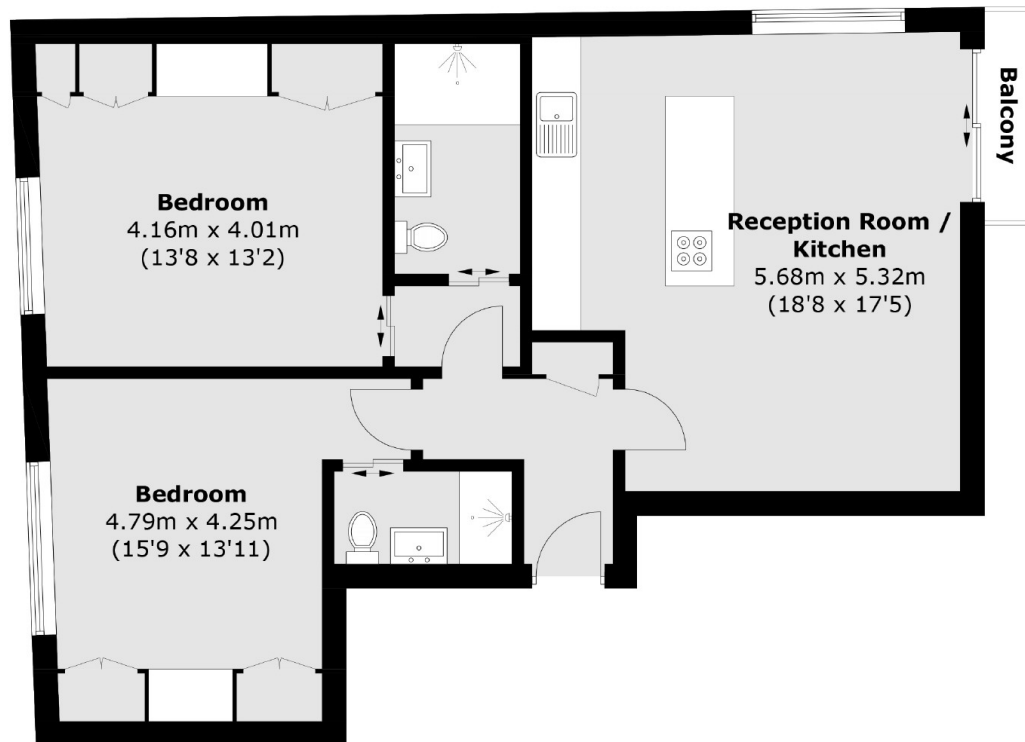
A stunning 2-bedroom, 2-bathroom apartment on the first floor of a modern industrial-style development. Spanning 860 sq ft, it features lift access, two private balconies, lime-washed wooden floors, and large triple-glazed windows flooding the space with natural light. The open-plan kitchen includes bespoke Neolith surfaces and an island with extractor hood, while bathrooms are finished with premium fittings. Both bedrooms have fitted wardrobes, built-in LG TVs, underfloor heating, and integrated blinds.

Located on Cremer Street, you're close to Kingsland Road, Hackney Road, and Shoreditch Triangle. Excellent transport links include Hoxton Overground, Old Street Underground, and Liverpool Street stations, all within easy walking distance.

Features

- Ready to move in
- 10-year warranty for peace of mind
- £0 ground rent
- Integrated kitchen appliances
- Lime washed wooden flooring
- Lift access
- Private balconies
- Underfloor heating

Cremer Street, London, E2



Second Floor

Total area (approx.): 76.7 sq. m (825.6 sq. ft)
Balcony : 1.4 sq. m (15.1 sq. ft)

Dexters

New Homes North & East
54 Borough High Street
London
SE1 1XL

020 7590 7299

Energy Rating: . We aim to make our particulars both accurate and reliable. However they are not guaranteed; nor do they form part of an offer or contract. If you require clarification on any points then please contact us, especially if you're traveling some distance to view. Please note that appliances and heating systems have not been tested and therefore no warranties can be given as to their good working order.

 **RICS** | Regulated
Estate Agent
and Letting Agent

[dexters.co.uk](https://www.dexters.co.uk)