



## Cremer Street, E2

### £800,000

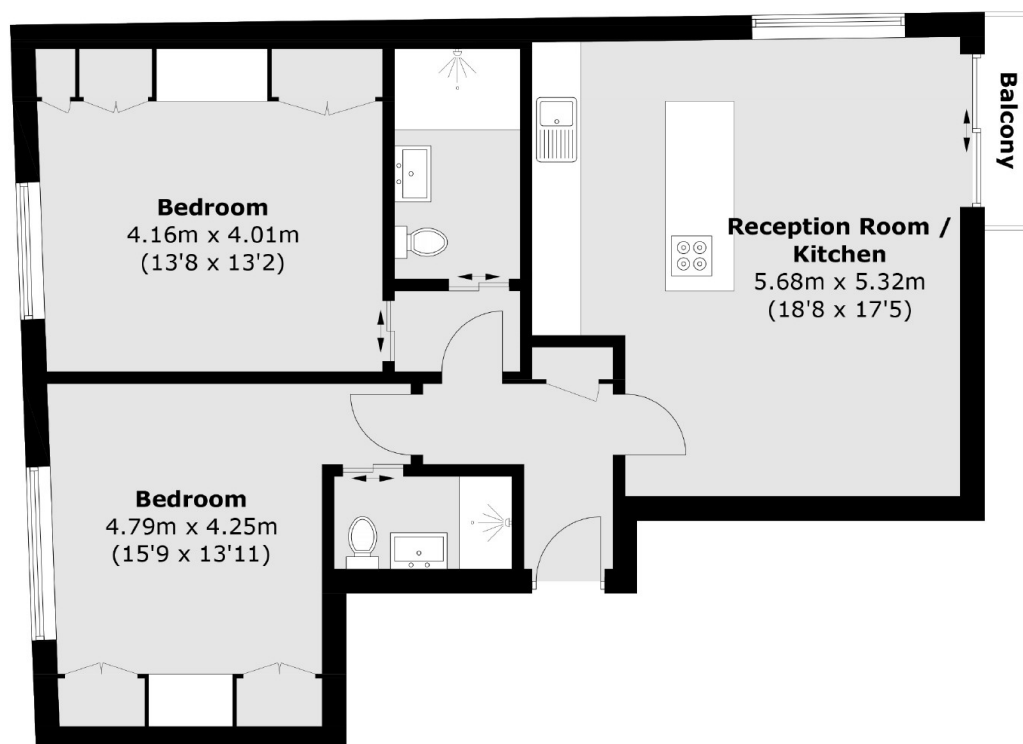
A stunning 2-bedroom, 2-bathroom apartment on the first floor of a modern industrial-style development. Spanning 860 sq ft, it features lift access, two private balconies, lime-washed wooden floors, and large triple-glazed windows flooding the space with natural light. The open-plan kitchen includes bespoke Neolith surfaces and an island with extractor hood, while bathrooms are finished with premium fittings. Both bedrooms have fitted wardrobes, built-in LG TVs, underfloor heating, and integrated blinds.

Located on Cremer Street, you're close to Kingsland Road, Hackney Road, and Shoreditch Triangle. Excellent transport links include Hoxton Overground, Old Street Underground, and Liverpool Street stations, all within easy walking distance.

### Features

- Ready to move in
- 10-year warranty for peace of mind
- £0 ground rent
- Integrated kitchen appliances
- Lime washed wooden flooring
- Lift access
- Private balconies
- Underfloor heating

# Cremer Street, London, E2



## Third Floor

Total area (approx.): 76.7 sq. m (825.6 sq. ft)  
Balcony : 1.4 sq. m (15.1 sq. ft)