



## Cremer Street, E2

### £1,750,000

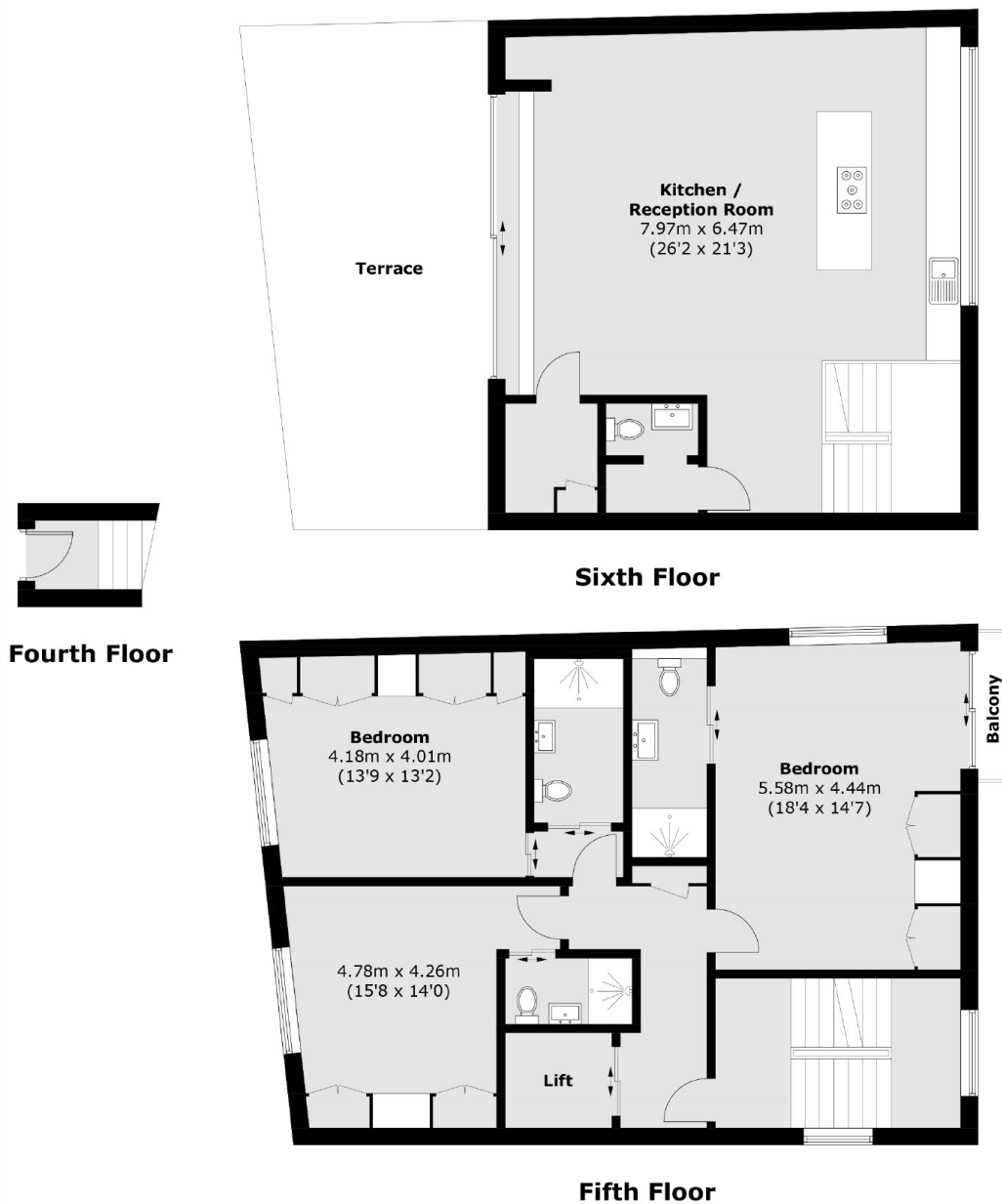
This exceptional penthouse duplex spans the entire 4th and 5th floors of a striking industrial-style development, offering 3 bedrooms, 3 bathrooms, and 1,847 sq ft of luxurious living space. Directly accessible from the lift, the top floor features a vast open-plan living area with a designer kitchen, large island, and sliding doors that open onto a private decked terrace with stunning North London views. The cleverly designed staircase maintains privacy while connecting the two floors seamlessly.

Situated on Cremer Street, the property is at the heart of London's trendiest neighborhoods, with Kingsland Road, Hackney Road, and Shoreditch High Street just a short walk away. Transport links are excellent, with Hoxton Overground a minute from your door, and Old Street and Liverpool Street stations within easy walking distance, providing superb access across the city.

### Features

- Ready to move in
- 10-year warranty for peace of mind
- £0 ground rent
- Integrated kitchen appliances
- Lime washed wooden flooring
- Lift access
- Private balconies
- Underfloor heating

# Cremer Street, London, E2



Total area (approx.): 167.2 sq. m (1,799.7 sq. ft)  
Balcony / Terrace: 35.2 sq. m (378.9 sq. ft)

## Dexters

New Homes North & East  
54 Borough High Street  
London  
SE1 1XL

020 7590 7299

Energy Rating: . We aim to make our particulars both accurate and reliable. However they are not guaranteed; nor do they form part of an offer or contract. If you require clarification on any points then please contact us, especially if you're traveling some distance to view. Please note that appliances and heating systems have not been tested and therefore no warranties can be given as to their good working order.

**RICS** Regulated  
Estate Agent  
and Letting Agent

dexters.co.uk