

Harvist Road, NW6

£625,000

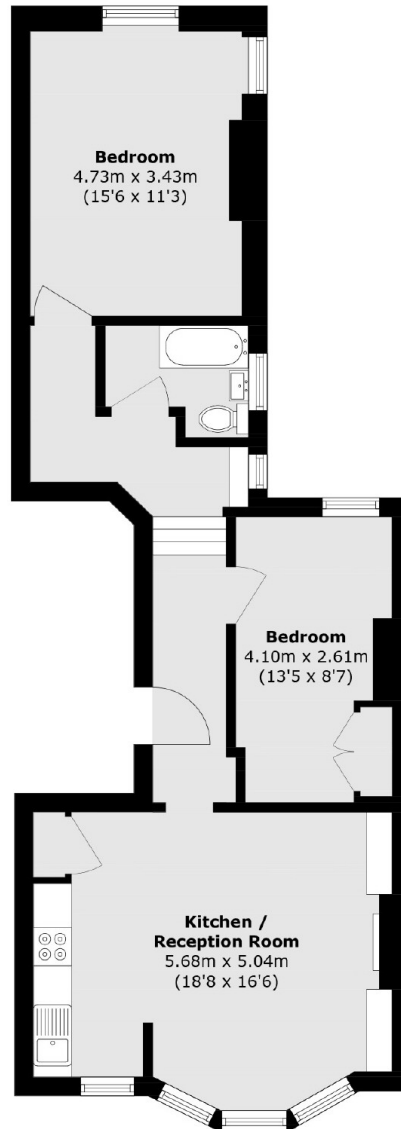
Set in a Victorian conversion is this light and spacious two double bedroom first floor flat. The property benefits from its close proximity to the green open spaces of Queen's Park, with a large reception room to the front occupying the bay window, the bedrooms to the rear, and available chain-free.

Harvist Road is residential street with easy access to the shops, cafes, restaurants and bars in both Queen's Park and Kensal Rise. Transport links include Queen's Park (Bakerloo & Overground) and Kensal Rise(Overground).

Features

- First Floor Flat
- Two Double Bedrooms
- Large Reception Room
- Chain-Free
- Opposite Queen's Park
- Close To Local Amenities

Harvist Road, London, NW6



Total area (approx.): 67.6 sq. m (727.6 sq. ft)