



## Manor Park Road, NW10

### £450,000

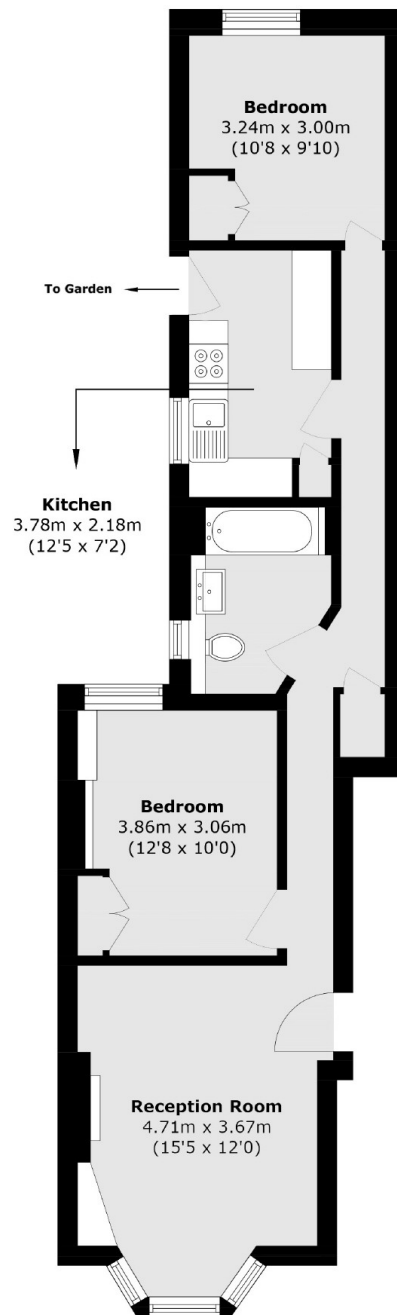
This stunning garden flat features two spacious double bedrooms with built-in wardrobes, a modern fully fitted kitchen with integrated appliances, and a stylish fully tiled bathroom. Immaculately decorated throughout, it also offers gas central heating, double glazing, and a beautifully maintained private garden.

Conveniently located just moments from Harlesden's vibrant amenities, this property boasts excellent transport links, making it an ideal choice for professionals and families alike.

### Features

- Two Bedrooms
- Ground Floor Flat
- Great Condition
- West-Facing Garden
- Share of Freehold
- Chain Free

# Manor Park Road, London, NW10



Total area (approx.): 64.7 sq. m (696.4 sq. ft)

## Dexters

Kensal Rise & Queen's Park  
62 Chamberlayne Road  
London  
NW10 3JJ

Sales  
020 8600 3100

Energy Rating: C. We aim to make our particulars both accurate and reliable. However they are not guaranteed; nor do they form part of an offer or contract. If you require clarification on any points then please contact us, especially if you're traveling some distance to view. Please note that appliances and heating systems have not been tested and therefore no warranties can be given as to their good working order.

 **RICS** | Regulated  
Estate Agent  
and Letting Agent

[dexters.co.uk](https://www.dexters.co.uk)