



Merino Gardens, E1W

£923 Per week

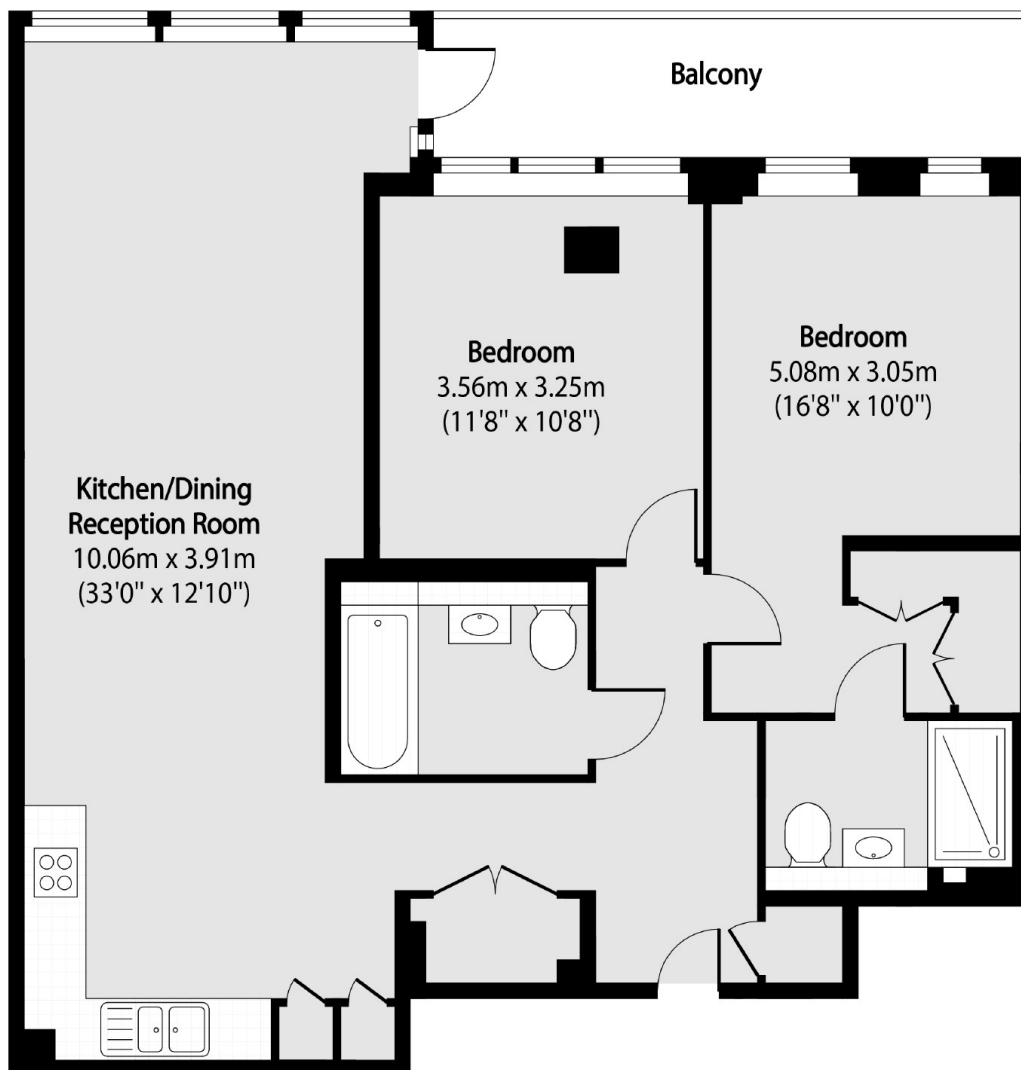
A fifth-floor apartment in the London Dock development, comprising two large double bedrooms with fitted wardrobes, two bathrooms, a spacious open-plan reception, a fully fitted kitchen, and a private balcony.

London Dock development is located adjacent to St Katharine's Dock and Tower Bridge, with a variety of bars and restaurants nearby.

Features

- Two Bedrooms
- Two Bathrooms
- High Specification
- Gym/Spa/Concierge
- Furnished
- Private Balcony

Merino Gardens, London, E1W



Total area (approx): 83.05 sq m (894 sq. ft)

Balcony total area (approx): 8.08 sq m (87 sq. ft)