



Wapping High Street, E1W

£600 Per week

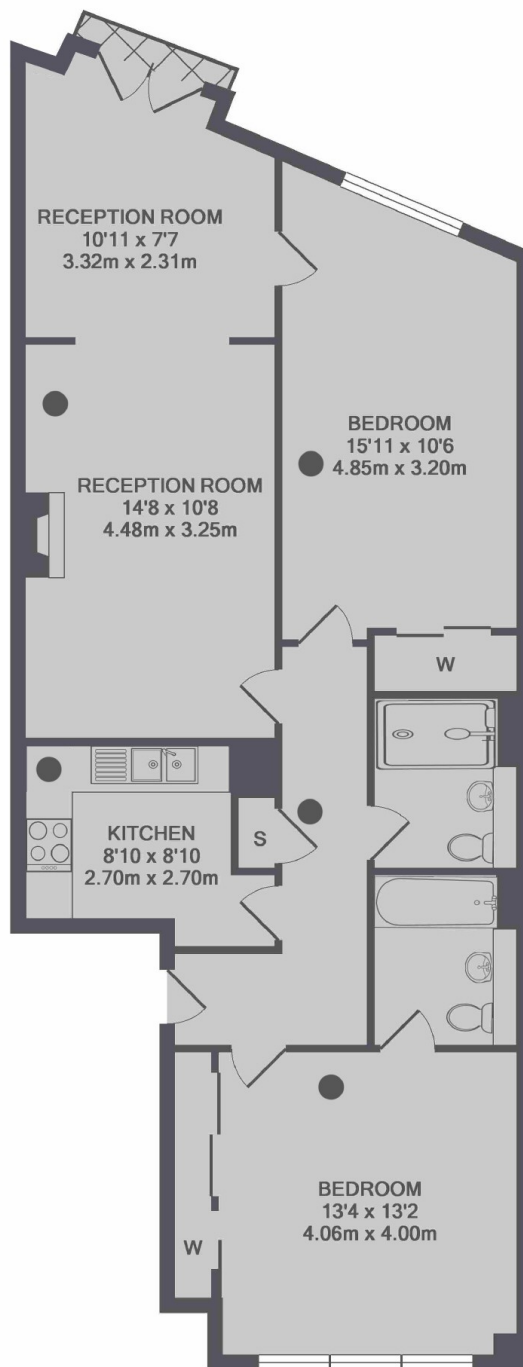
A two double bedroom property on the first floor of Dundee Court. This property has a spacious reception room with wood floors, a separate kitchen with in built appliances, two double bedrooms and two bathrooms. Also includes a day porter.

Dundee Court is located on Wapping High Street and is a short walk away from a variety of famous pubs, restaurants and amenities.

Features

- Two Double Bedrooms
- Two Bathrooms
- Spacious
- Wood Floors
- Exposed Brick Work
- Day Porter

Wapping High Street, London, E1W



TOTAL APPROX. FLOOR AREA 991 SQ.FT. (92.1 SQ.M.)

Dexters

Wapping
123 Wapping High Street
London
E1W 3NX
Lettings
020 7650 5351

Energy Rating: C. We aim to make our particulars both accurate and reliable. However they are not guaranteed; nor do they form part of an offer or contract. If you require clarification on any points then please contact us, especially if you're traveling some distance to view. Please note that appliances and heating systems have not been tested and therefore no warranties can be given as to their good working order.

 **RICS** | Regulated
Estate Agent
and Letting Agent

[dexters.co.uk](https://www.dexters.co.uk)