



## Wapping Wall, E1W

£1,107 Per week

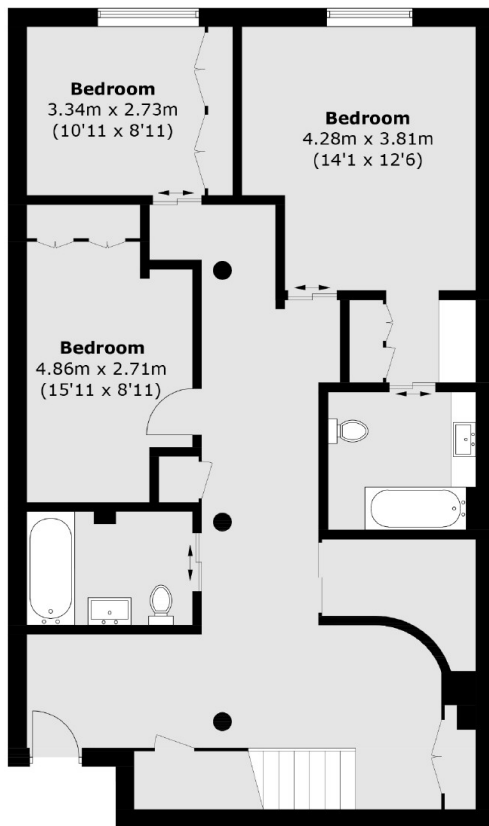
A split level two bedroom three bathroom apartment in a Grade II listed building. This property has been recently renovated, furnished to a high standard with a private balcony offering views of the River Thames and Canary Wharf.

Great Jubilee Wharf is a small converted warehouse made up of 30 bespoke apartments, set on a cobblestone street in Wapping, within easy reach of Wapping Green and local amenities and shops.

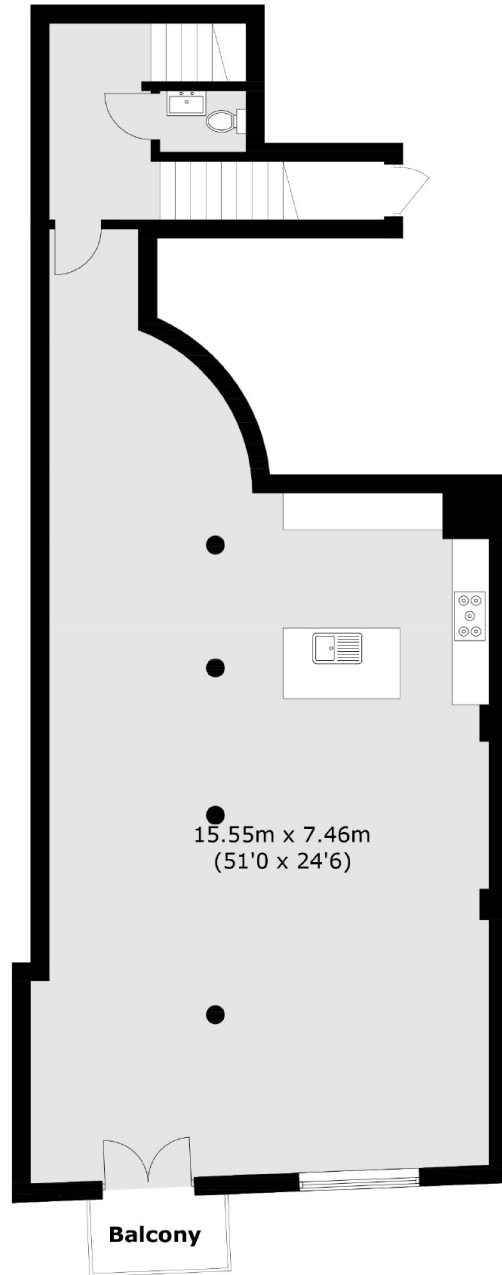
### Features

- Two Bedrooms
- Three Bathrooms
- Private Balcony
- River Views
- Split Level
- Furnished

# Wapping Wall, London, E1W



**Ground Floor**



**First Floor**

Total area (approx.): 194.4 sq. m (2,092.5 sq. ft)  
Balcony (approx.): 2.6 sq. m (28.0 sq. ft)

## Dexters

Wapping  
123 Wapping High Street  
London  
E1W 3NX  
Lettings  
020 7650 5351

Energy Rating: C. We aim to make our particulars both accurate and reliable. However they are not guaranteed; nor do they form part of an offer or contract. If you require clarification on any points then please contact us, especially if you're traveling some distance to view. Please note that appliances and heating systems have not been tested and therefore no warranties can be given as to their good working order.

 **RICS** | Regulated  
Estate Agent  
and Letting Agent

[dexters.co.uk](https://www.dexters.co.uk)