



**East Smithfield, E1W**

**£2,500,000**

**Dexters**



## East Smithfield, E1W

Presented in immaculate condition and offered on a chain free basis is this four bedroom home within Ivory House. Features to include triple aspect reception room offering water views, re-fitted kitchen, re-fitted bathrooms, two parking spaces and concierge service.

The property comprises of main entrance lobby with concierge desk and lift to all floors.

Accommodation consists of entrance hall, triple aspect reception offering water views from all sides and re-fitted kitchen.

Master bedroom with walk-in wardrobe and modern en-suite shower room, second bedroom with modern en-suite shower room, bedroom three and bedroom four.

The Ivory House is conveniently located for the restaurants, bars and cafes of St Katharine Docks, and is within easy walking distance of Tower Hill Underground Station and the forthcoming Whitechapel Crossrail service.

### Features

- Over 2000 sq.ft
- Four Bedrooms
- Three Bathroom
- Re-fitted Bathroom
- Re-fitted Kitchen
- Two Parking Spaces

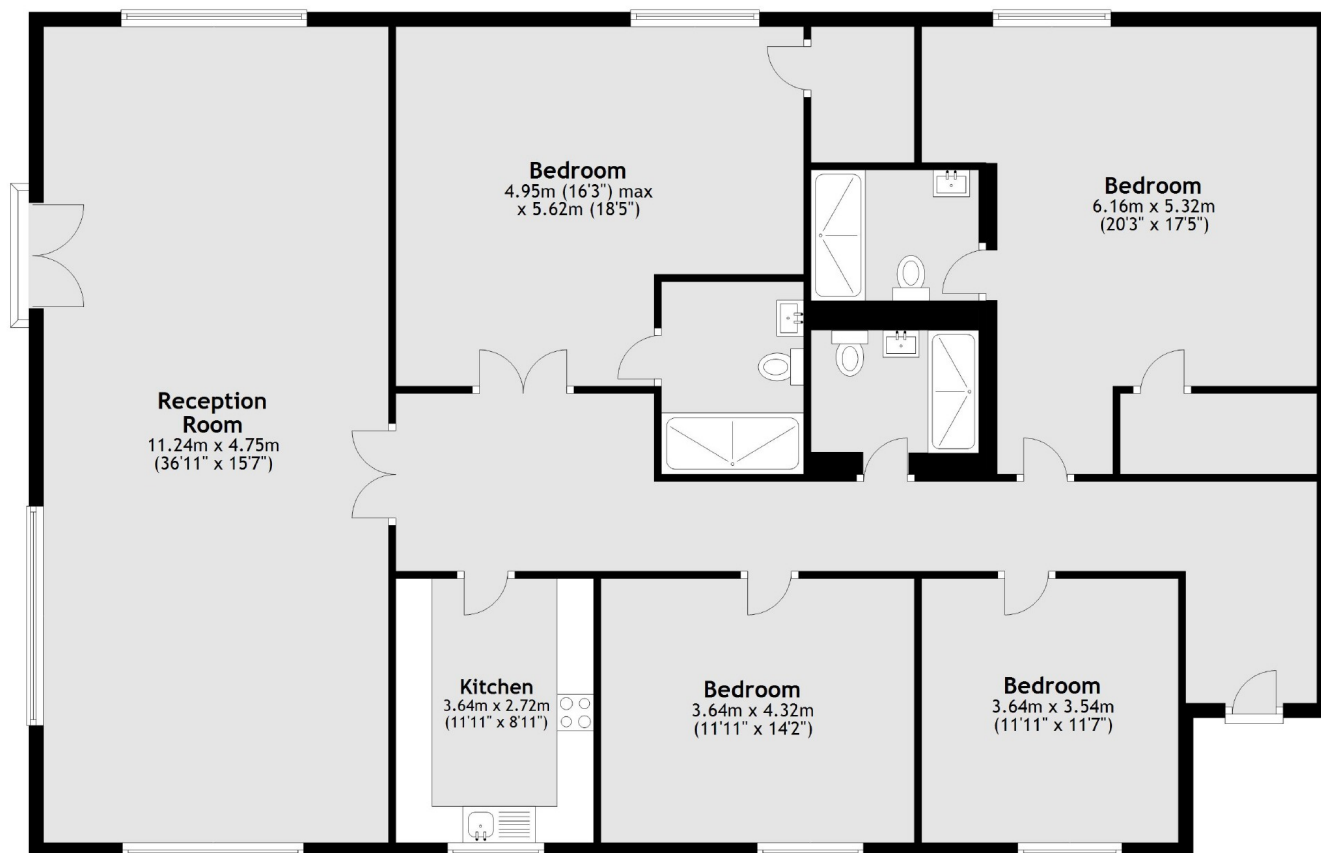






# East Smithfield, St Katharine Docks, E1W

## First Floor



Total area: approx. 193.4 sq. metres (2081.7 sq. feet)