



## Wapping Lane, E1W

### £725,000

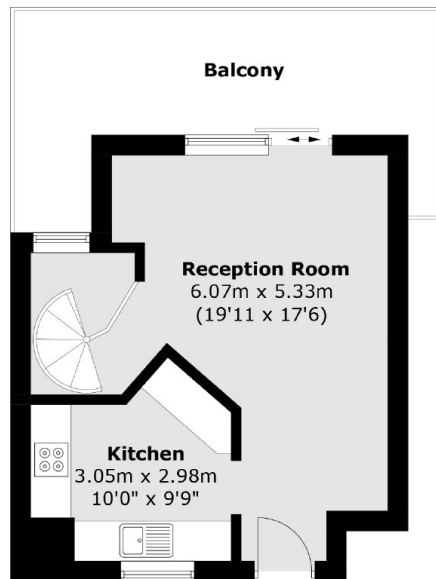
Welcome to this delightful two-bedroom split-level home, ideally situated in the heart of Wapping. Beautifully presented throughout, the property offers a well-balanced layout and an abundance of natural light. Key features include a spacious private balcony, two well-appointed bathrooms, and the added convenience of an allocated parking space. Located within easy reach of local amenities, riverside walks, and excellent transport links, this charming home is ideal for professionals, couples, or anyone looking to enjoy a vibrant yet peaceful London lifestyle.

Wapping Lane is just 330 feet from Wapping Overground Station which offers excellent links around the City.

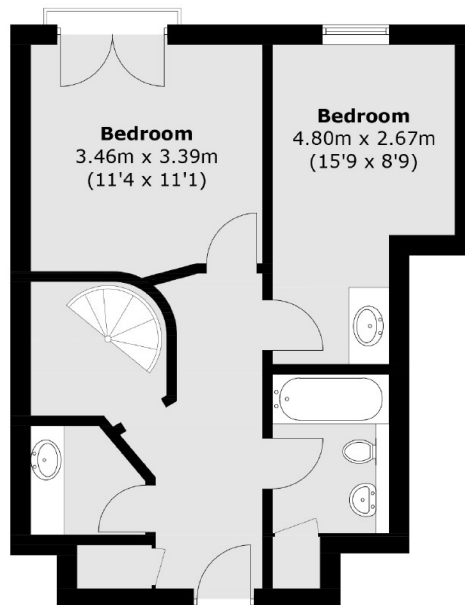
### Features

- Split Level
- Two Bedrooms
- Central Wapping
- Private Balcony
- Allocated Parking
- Two Bathrooms

# Wapping Lane, London, E1W



**Third Floor**



**Second Floor**

Total area (approx.): 75.5 sq. m (812.7 sq. ft)  
Balcony: 14.1 sq. m (151.8 sq. ft)