



Merino Gardens, E1W

£1,096 Per calendar month

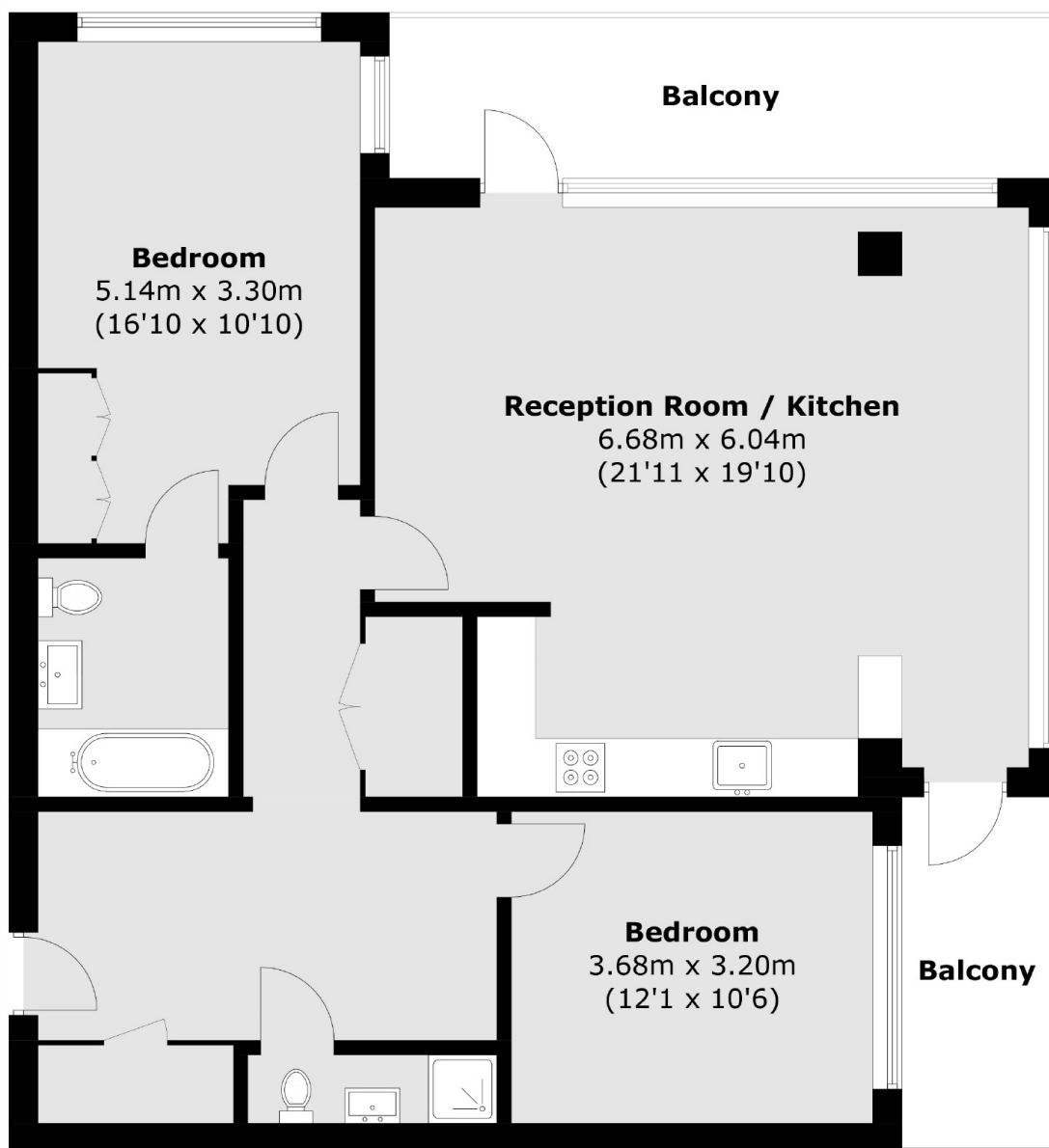
Located on the tenth floor and offering over a 1,000 Sq.Ft of ample living space is this two bedroom modern apartment. Features to include two private balconies, residents leisure facilities and concierge service.

Local transport links include the London Underground and Docklands Light Railway, giving residents easy access to the City, Canary Wharf, and the West End.

Features

- 1029 Square Feet
- Tenth Floor
- 24 Concierge
- Cinema Room
- Swimming Pool
- Virtual Golf Simulator

Merino Gardens, London, E1W



Tenth Floor

Total area (approx.): 95.6 sq. m (1,029.0 sq. ft)
Balcony: 16.8 sq. m (180.8 sq. ft)