

Rolling Mills Mews, E14

£475,000

Welcome to this charming two-bedroom home located in the heart of Limehouse.

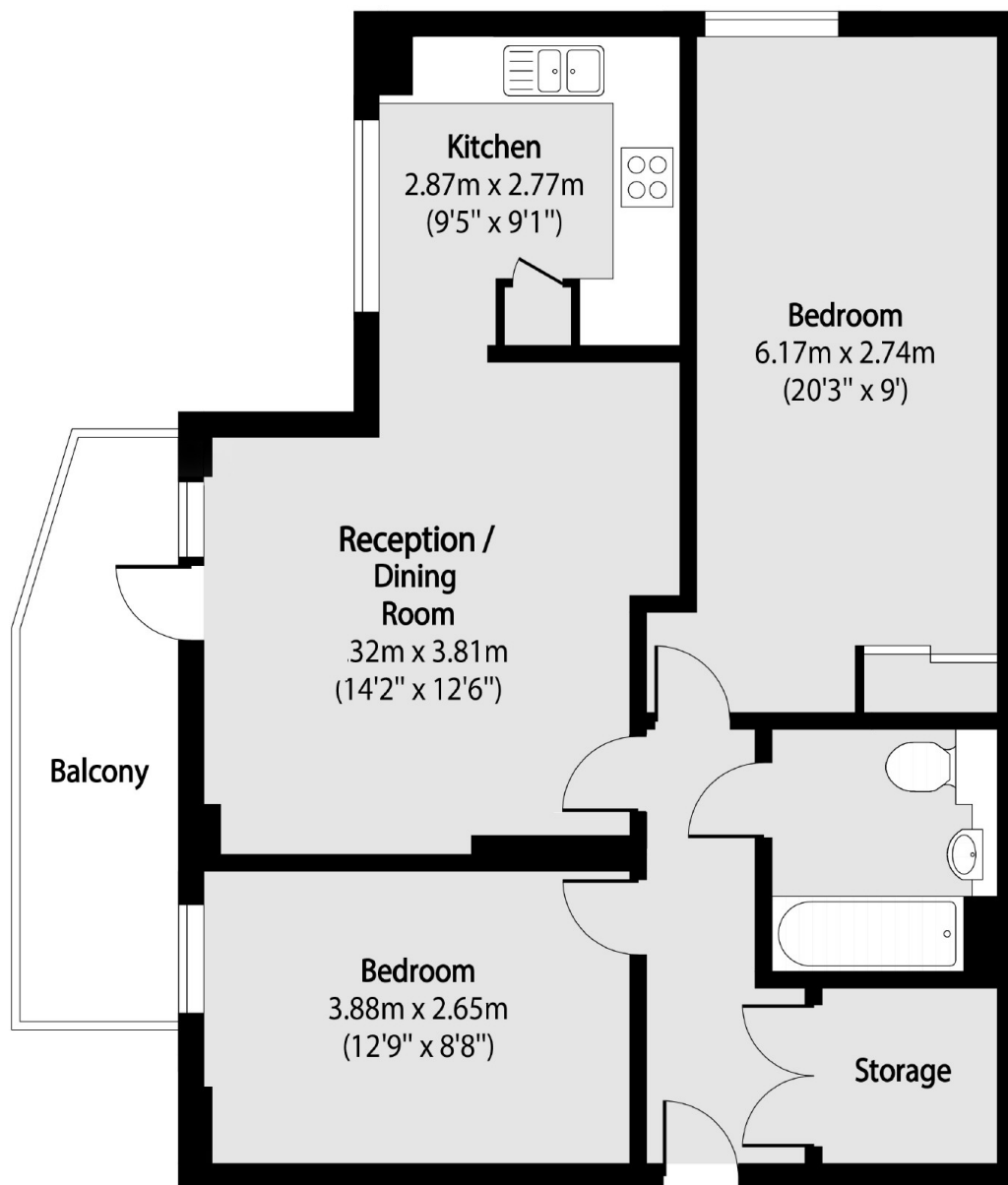
This well-presented property benefits from a private balcony, access to a communal roof terrace, and is offered to the market chain-free making it an ideal choice for both first-time buyers and investors alike.

Rolling Mills Mews is ideally located just 0.2 miles from Limehouse DLR Station, providing excellent transport links across the City and beyond.

Features

- Two Bedrooms
- Moments From Station
- Chain Free
- Private Balcony
- Communal Roof Terrace
- Limehouse

Rolling Mills Mews, London, E14



Total area (approx): 68.47 sq m (737 sq. ft)

Balcony total area (approx): 7.25 sq m (78 sq. ft)