



## Victory Place, E14

### £565,000

Offered to the market is this well-presented two-bedroom home located within the sought-after Victory Place development. The property benefits from a private balcony overlooking Limehouse Basin, an open-plan reception area, residents' gym, and a concierge service.

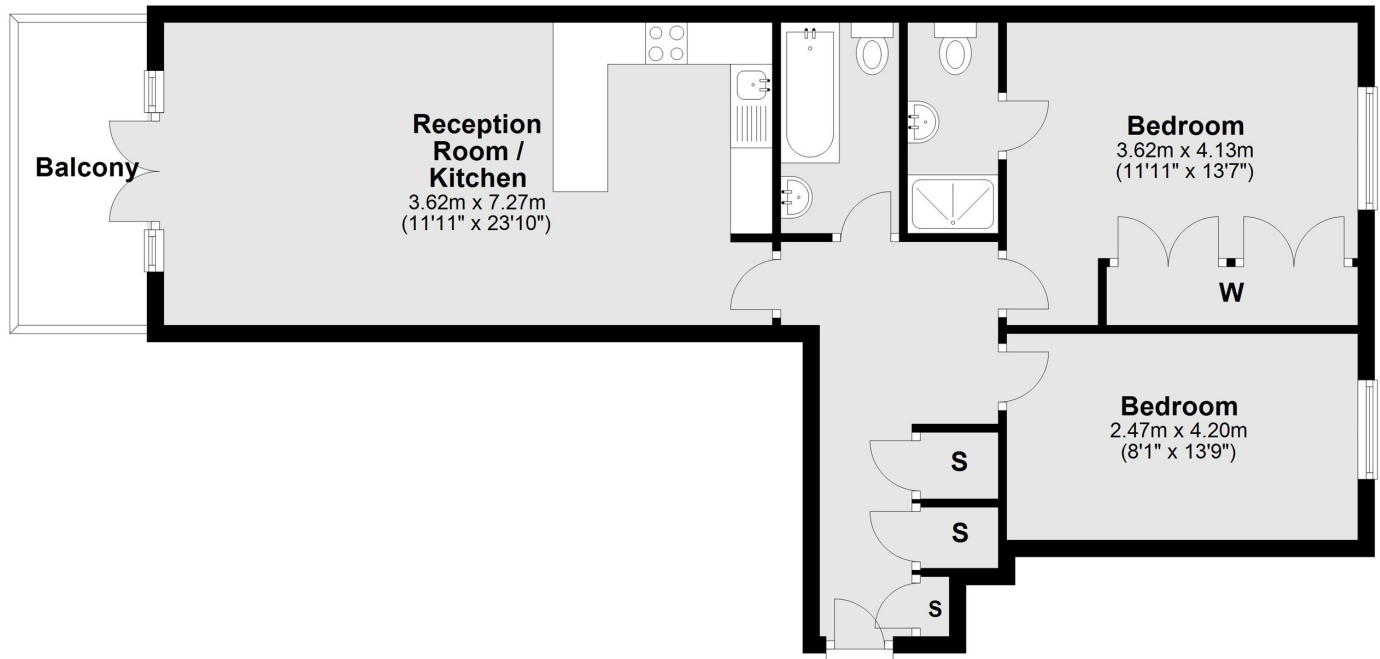
Victory Place is located just 0.4 miles from Limehouse DLR station, offering excellent transport links into the City.

### Features

- Views Of Limehouse Basin
- Private Balcony
- Concierge Service
- Residents Gym
- Chain Free
- Open Planned Reception

# Victory Place, London, E14

## Second Floor



Total area: approx. 70.1 sq. metres (754.9 sq. feet)