



## Wapping Wall, E1W

£500,000

Located within this sought after river fronted development in Wapping is this one bedroom home. Features to include private balcony, 24 concierge service, 900 plus year lease as well as the property offering an abundance of light throughout.

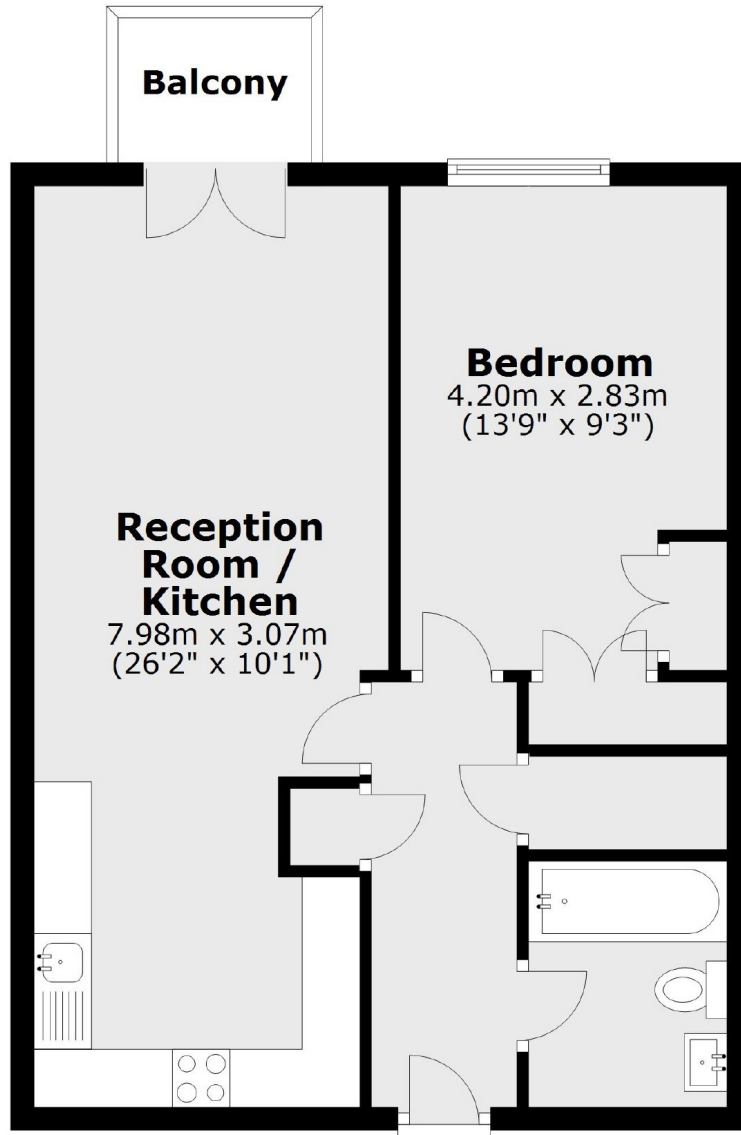
Situated on Wapping Wall next to the famous pub the Prospect of Whitby and a short walk away Wapping Station which offers good links to The City and the Jubilee line.

### Features

Guide Price £500,000-  
£525,000  
Private Balcony  
515.4 sq.ft  
24 Hour Concierge  
900 Plus Year Lease  
Parking

Wapping Wall,  
London, E1W

## First Floor



Main area: Approx. 47.9 sq. metres (515.4 sq. feet)  
Plus balconies, approx. 2.3 sq. metres (24.4 sq. feet)

**Dexters**

Wapping  
123 Wapping High Street  
London  
E1W 3NX  
Sales  
020 7650 5350

Energy Rating: E. We aim to make our particulars both accurate and reliable. However they are not guaranteed; nor do they form part of an offer or contract. If you require clarification on any points then please contact us, especially if you're traveling some distance to view. Please note that appliances and heating systems have not been tested and therefore no warranties can be given as to their good working order.

 **RICS** | Regulated  
Estate Agent  
and Letting Agent

[dexters.co.uk](http://dexters.co.uk)